



2024 PRODUCT CATALOGUE



# European Experts in Residential Modules

*With over 27 years of experience in photovoltaic panel manufacturing, we work hard to provide our customers with the most durable, efficient, and aesthetically pleasing panels, focusing our efforts on the European residential market.*



SINCE  
1997  
more than  
energy





MORE THAN  
ENERGY

# European Experts in Residential Modules

4 / 5

## EURENER

About us

6 / 7

## MEPV SERIES PRODUCT RANGE

Which Eurener module is the  
most suitable for your project?

8 / 18

## MEPV NEXA Series

NEXA BIF  
NEXA PLUS

20 / 28

## MEPV ULTRA Series

30 / 48

## MEPV ICON Series

ICON  
ICON PLUS  
ICON PLUS BIF

50 / 54

## MEPV AGRO Series

56 / 60

## MEPV COLOURED Series



## Time to be independent

Because Eurener wants to democratize energy and enable consumers to produce their own electricity independently, ethically, and sustainably, we manage the production and distribution of aesthetic, durable, and environmentally friendly solar modules.

## Long live the modules

At Eurener, we ensure the long-term durability and performance of our panels, which is why our warranties are above the market average. Your installation will benefit from sustainable energy for longer, giving you peace of mind and financial security for your investment.

// **20**  
YEARS

### PRODUCT WARRANTY

» FOR MODULES WITH BACKSHEET

**+5 years** for Premium Partners

// **30**  
YEARS

### PERFORMANCE WARRANTY

» ON ALL OUR MODULES

// **25**  
YEARS

### PRODUCT WARRANTY

» ON DOUBLE GLASS MODULES

**+5 years** for Premium Partners

» *Longer warranties for a brighter future.*

## European Experts in residential modules

With over 27 years of experience in photovoltaic panel manufacturing, we work hard to provide our customers with the most durable, efficient, and aesthetically pleasing panels, focusing our efforts on the European residential market.



## Certified reliability

We are proud to hold the world's leading certifications for both our products and our company. We have also been awarded the prestigious TOP Brand seal by EUPD Research as the module of choice for European installers.



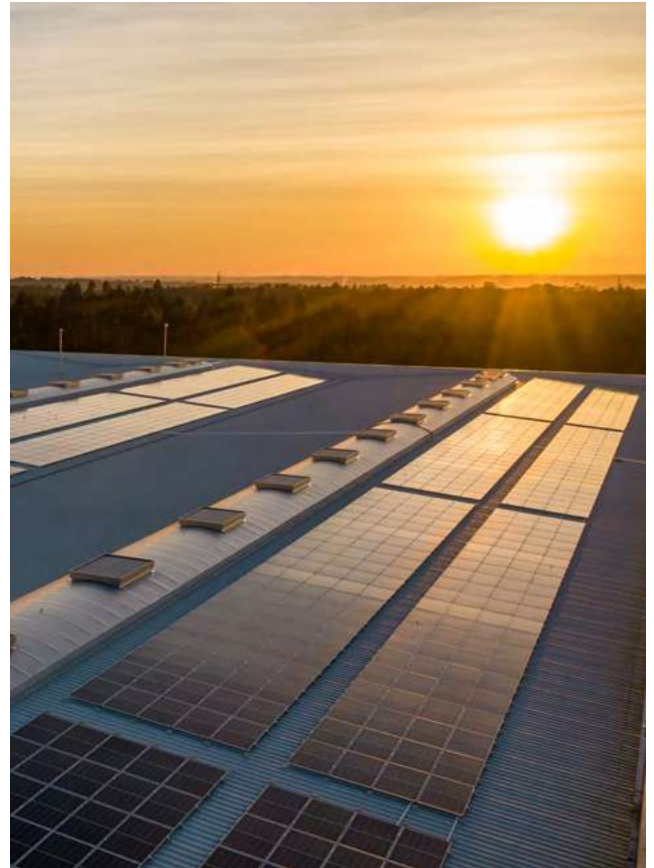
## Sustainable progress

Working in the solar industry means striving to do what is best for the planet, which is why we are committed to being as sustainable as possible at every stage, from the sourcing of our raw materials to the manufacturing process and recycling of our products.

## Unlimited logistics

We want to reach out wherever we are needed, and thanks to our warehouses in Europe, and together with the service offered by our Premium Partners in different countries, we offer logistical services that take Eurener modules to where they are required: to the construction site or your warehouse.

*» Light up your world with the innovative range of Eurener solar panels, a sustainable energy source that will improve your quality of life thanks to its efficiency and technology.*



## A wise investment

Secure your operations with Eurener. We customize our payment options to meet the diverse needs of our partners by analyzing each case meticulously and recommending the optimal payment method and terms for your peace of mind.

## Your personalized journey starts here

We believe in fostering long-term, trusting relationships with our customers through quality two-way communication, supported by our multi-lingual team. Enjoy a personalised global service, committed to providing the highest quality and satisfaction in our products and services.



## Reliability for your projects

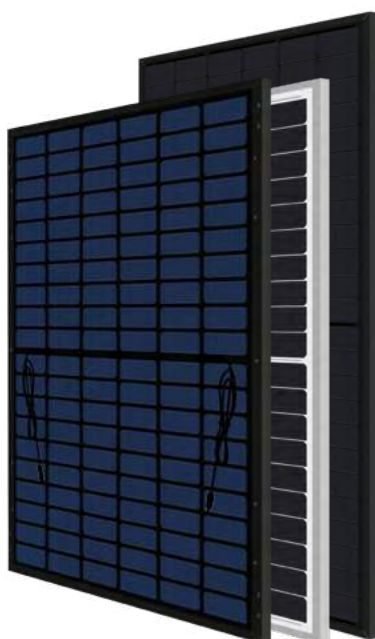
Our wide range of products, together with the ability to produce ad hoc modules and the know-how gained from many years of experience, results in a reliable and robust product with a high-quality finishing and long-term performance.

### MEPV NEXA SERIES

NEXA BIF  
NEXA PLUS

*from 420 to 580Wp*

*pag. 8/18*



/ **25 YEARS**  
PRODUCT WARRANTY  
FOR NEXA BIF  
**+5 years** for Premium Partners

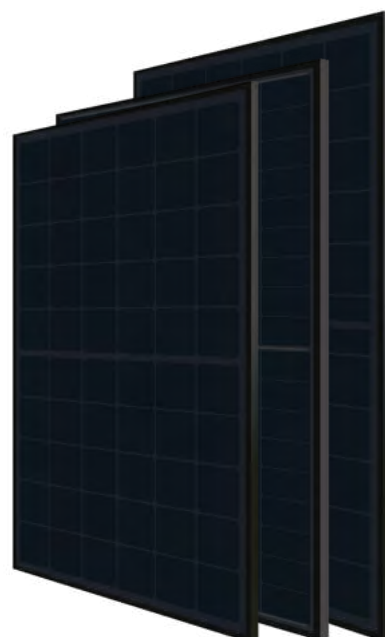
/ **20 YEARS**  
PRODUCT WARRANTY  
FOR NEXA PLUS  
**+5 years** for Premium Partners

/ **30 YEARS**  
PERFORMANCE WARRANTY

### MEPV ULTRA SERIES

*from 400 to 460Wp*

*pag. 20/28*



/ **20 YEARS**  
PRODUCT WARRANTY  
**+5 years** for Premium Partners

/ **30 YEARS**  
PERFORMANCE WARRANTY

## Choices that reduce your carbon footprint

Eurener photovoltaic modules have become one of the most efficient and versatile options in the market. We work with technologies that adapt to residential, commercial, and ground-mounted installations.

### MEPV ICON SERIES

ICON  
ICON PLUS  
ICON PLUS BIF

*from 340 to 550Wp*

*pag. 30/48*

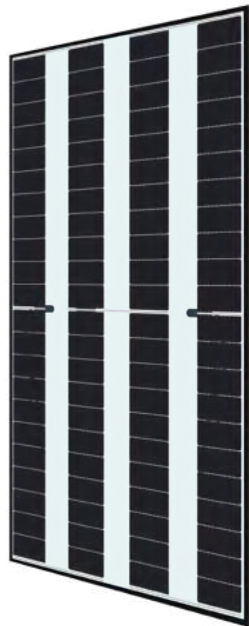


- / **25 YEARS**  
PRODUCT WARRANTY  
FOR ICON PLUS BIF  
**+5 years** for Premium Partners
- / **20 YEARS**  
PRODUCT WARRANTY  
FOR ICON AND ICON PLUS  
**+5 years** for Premium Partners
- / **30 YEARS**  
PERFORMANCE WARRANTY

### MEPV AGRO SERIES

*from 325 to 335Wp*

*pag. 50/54*



- / **25 YEARS**  
PRODUCT WARRANTY  
**+5 years** for Premium Partners
- / **30 YEARS**  
PERFORMANCE WARRANTY

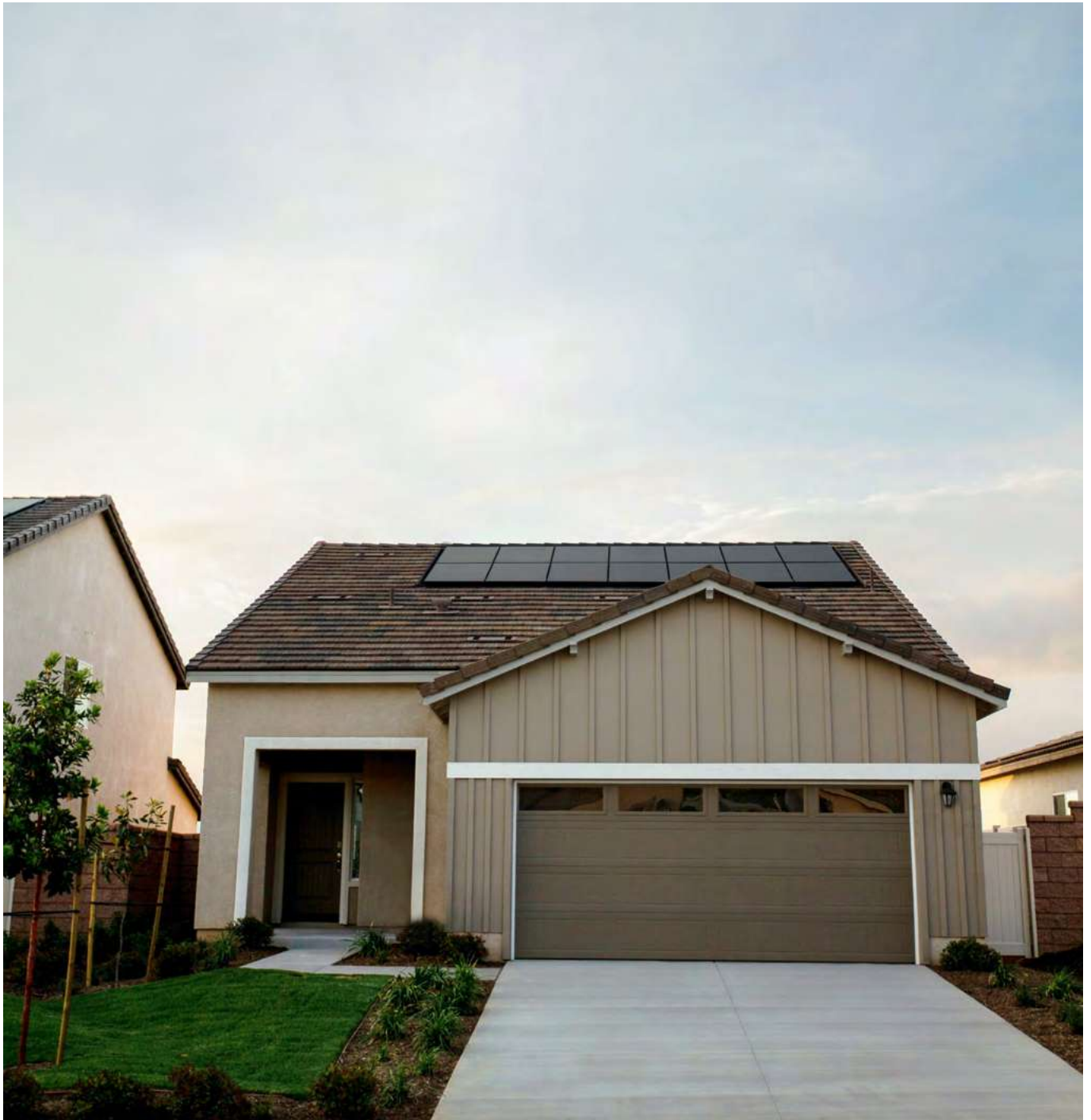
### MEPV COLOURED SERIES

*from 350 to 360Wp*

*pag. 56/60*



- / **20 YEARS**  
PRODUCT WARRANTY  
**+5 years** for Premium Partners
- / **30 YEARS**  
PERFORMANCE WARRANTY



## MEPV NEXA Series

✎ *The next level of solar*

The perfect fusion of the latest technologies in a versatile panel, ideal for different types of solar installations. Exceptional warranties and a premium finishing that redefines excellence in solar energy.



# MEPV NEXA BIF

from 420 to 480 Wp



## N-type cell

Due to their composition, offer higher performance and efficiency than P-type cells and reduce the LID and LeTID effects.



## Lower temperature impact

Modules with better temperature coefficient that reduces thermal losses and improves efficiency in hot climates.



## TOPCon technology

It adds a thin oxide layer to the cell composition to further reduce recombination losses and increase the efficiency.



## SuperMBB

Reduced resistance losses and improved current collection thanks to an increase in the busbars number.



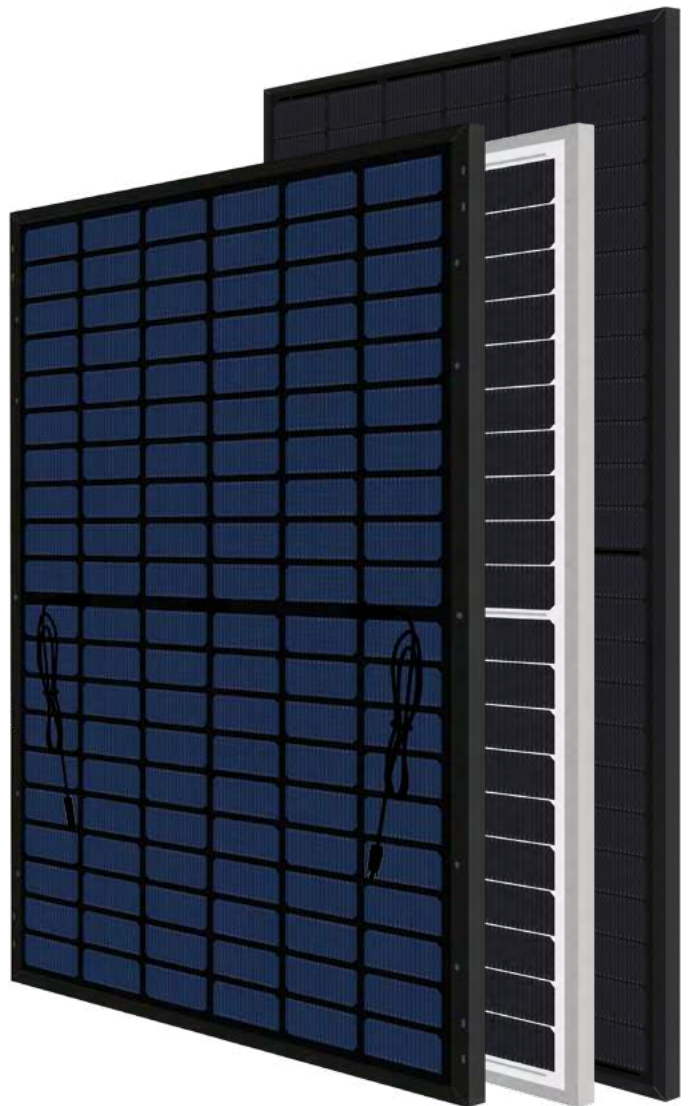
## Bifacial

Bifaciality effectively improves rear power generation with more than a 10% increase in the output compared to having only a monofacial side.



## Sustainability

Resistant and long-lasting modules with high percentage of recyclable materials.



# MEPV NEXA PLUS

from 570 to 580Wp



## N-type cell

Due to their composition, offer higher performance and efficiency than P-type cells and reduce the LID and LeTID effects.



## Lower temperature impact

Modules with better temperature coefficient that reduces thermal losses and improves efficiency in hot climates.



## TOPCon technology

It adds a thin oxide layer to the cell composition to further reduce recombination losses and increase the efficiency.



## SuperMBB

Reduced resistance losses and improved current collection thanks to an increase in the busbars number.



## Enhanced power output

Modules with bigger PV areas with a higher number of cells per module significantly increasing the power output.



## High production for demanding projects

Perfect modules for PV power stations and other kind of large installations.





## **MEPV NEXA Series**

### **DATA SHEETS**

#### **MEPV NEXA BIF from 420 to 480Wp**

- › Eurener MEPV 108 NEXA Bif 420-435Wp  
*pag. 13/14*
- › Eurener MEPV 120 NEXA Bif 475-480Wp  
*pag. 15/16*

#### **MEPV NEXA PLUS from 570 to 580Wp**

- › Eurener MEPV 144 NEXA Plus 570-580Wp  
*pag. 17/18*



MORE THAN  
ENERGY



# Nexa Bif

MEPV 108 cells — Eurener PV Module

› 420/425/430/435 Wp



## N-type cell

Higher resistance to LID and LeTID



## TOPCon

Technology to increase cell efficiency



## Bifacial cell

Improved energy yield



## Easy to handle

Comfortable installation thanks to an optimized area size



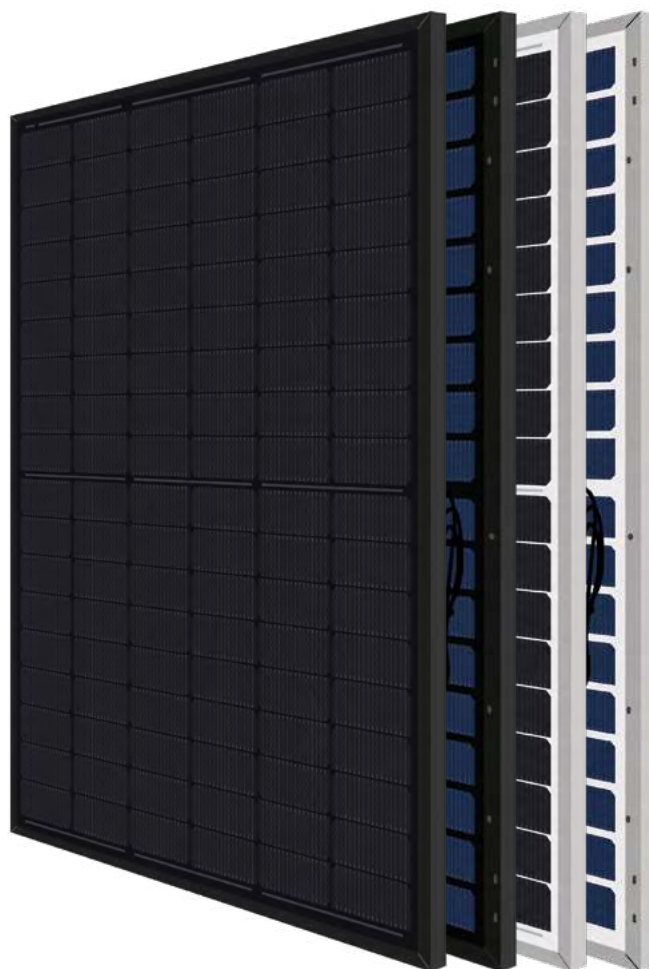
## Better temperature coefficient

Minimized thermal losses, improved efficiency



## Sustainable product

High percentage of recyclable materials



**25 Years**

**Product Warranty**

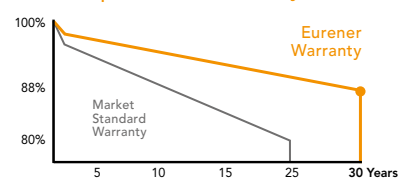
+5 years for Premium Partners

**30 Years**

**Performance Warranty**

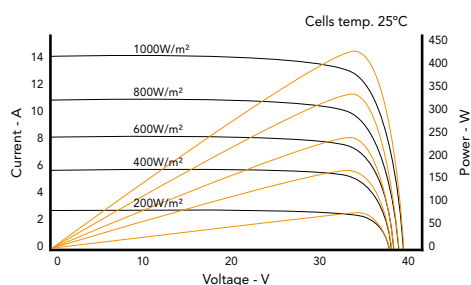
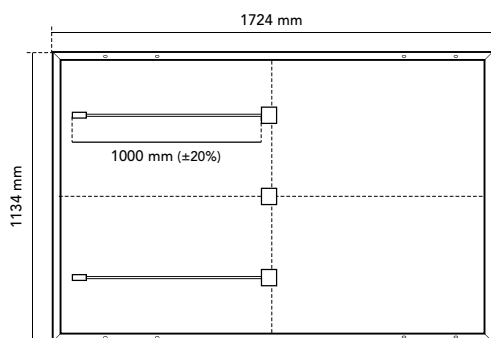
Linear Warranty

88% performance at 30 years





## Eurener MEPV 108 — NEXA Bif 420-435Wp



### Mechanical Specification

Solar cells	108 (6 x 18), N-Type bifacial monocrystalline silicon cells
Front Glass	2mm anti-reflective surface solar glass
Back Glass	2mm solar glass
Frame	Black/silver anodized aluminium
Junction Box	IP68, 3 by-pass diodes
Connector	Original MC4-Evo 2
Cable	1000 mm (±20%) length and 4 mm² section
Dimension	1724 x 1134 x 30 mm (±1%)
Area	1,96 m²
Weight and packaging	23,4 kg, 962 pcs-truck

### Temperature Coefficients

Temperature coefficient of Isc ( $\alpha$ )	0,045 %/°C
Temperature coefficient of Voc ( $\beta$ )	-0,275 %/°C
Temperature coefficient of Pmax ( $\gamma$ )	-0,29 %/°C
Temperature range	-40 °C ~ +85 °C
Nominal operating cell temperature (NOCT)	45 ± 2 °C

Black - Standard	MEPV 420	MEPV 425	MEPV 430	MEPV 435
<b>STC: 1000 W/m², module temperature 25°C, AM 1,5</b>				
Nominal power. Pmax	420 Wp	425 Wp	430 Wp	435 Wp
Module efficiency	21,49 %	21,75 %	22,01 %	22,26 %
Short-circuit current (Isc)	14,08 A	14,16 A	14,26 A	14,30 A
Open-circuit voltage (Voc)	38,09 V	38,28 V	38,42 V	38,70 V
Maximum power current (Imp)	13,34 A	13,42 A	13,52 A	13,56 A
Maximum power voltage (Vmp)	31,49 V	31,68 V	31,82 V	32,09 V
<b>NOCT: 800 W/m², ambient temperature 20°C, AM 1,5</b>				
Nominal power. Pmax	321,64 W	325,38 W	329,33 W	333,12 W
Short-circuit current (Isc)	11,34 A	11,41 A	11,47 A	11,54 A
Open-circuit voltage (Voc)	36,52 V	36,70 V	36,88 V	37,06 V
Maximum power current (Imp)	10,75 A	10,81 A	10,88 A	10,94 A
Maximum power voltage (Vmp)	29,92 V	30,10 V	30,27 V	30,45 V
<b>Electrical characteristics with 10% rear side power gain</b>				
Nominal power. Pmax	462,00 W	467,50 W	473,00 W	478,50 W
Short-circuit current (Isc)	15,43 A	15,52 A	15,63 A	15,67 A
Open-circuit voltage (Voc)	38,09 V	38,31 V	38,49 V	38,85 V
Maximum power current (Imp)	14,63 A	14,72 A	14,82 A	14,86 A
Maximum power voltage (Vmp)	31,58 V	31,76 V	31,91 V	32,21 V
<b>Operating parameters</b>				
Maximum voltage	1000 - 1500 V			
Maximum series fuse rating. Ir	25 A			
Power output tolerance	0 - +3%			
Voc and Isc tolerance	±3%			
Fire rating	Class A (UL 790)			
Protection class	Class II (IEC 61140)			
Hail resistance	Ø 25mm at 23 m/s (IEC 61215)			
Mechanical loads	Front load 5400 Pa, Back load 2400 Pa			

NOTE: Read the instruction manual of this product and follow the indications STC. Values are valid for: 1000W/m², AM 1,5 and cells temperature of 25°C. Measurement tolerance +/-3% (AAA Solar simulation -IEC 60.904-9-). All the information of this brochure may be amended without notice by Eurener.

Eurener\_MEPV 108\_NEXA Bif\_420-435Wp\_EN\_JAN2024

**SINCE**  
**1997**  
more than  
energy



**eurener.com**  
**contact@eurenerworld.com**  
**+34 960 045 515**  
**Calle Colón, 1-23**  
**46004, Valencia. Spain**

### Manufacturing a better world

Since 1997 our main purpose has been to supply quality and long-lasting photovoltaic modules that allow us and future generations, to continue generating clean energy to take care of our planet.

# Nexa Bif

MEPV 120 cells — Eurener PV Module

› **475/480Wp**



## N-type cell

Higher resistance to LID and LeTID



## TOPCon

Technology to increase cell efficiency



## Bifacial cell

Improved energy yield



## SuperMBB

Reduced resistance losses and improved current collection



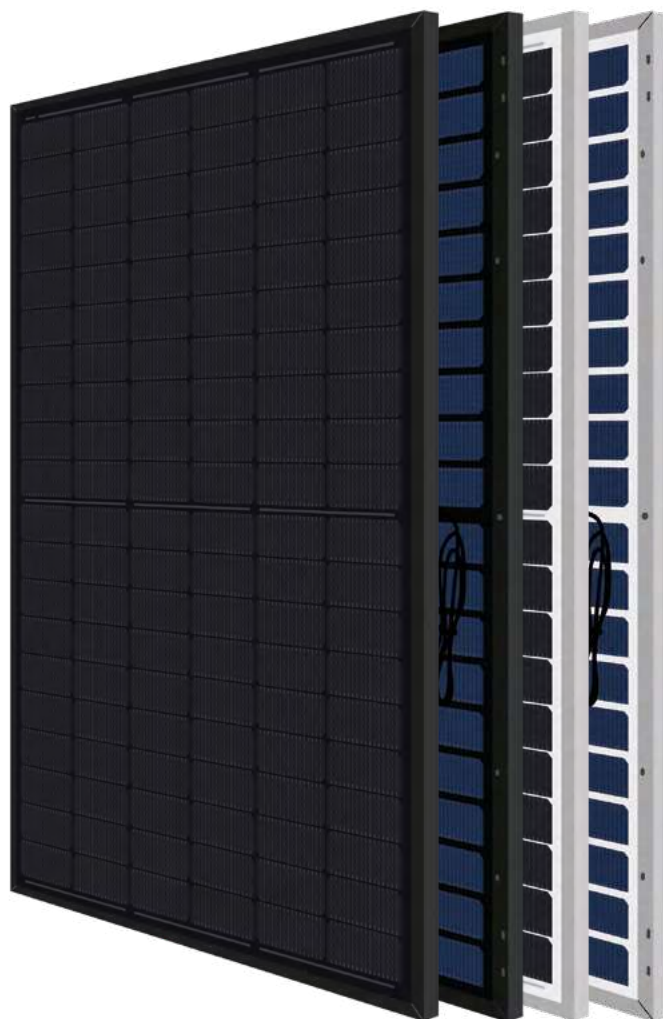
## Better temperature coefficient

Minimized thermal losses, improved efficiency



## Sustainable product

High percentage of recyclable materials



**25 Years**

**Product Warranty**

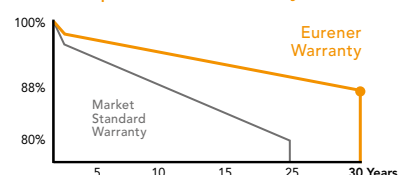
+5 years for Premium Partners

**30 Years**

**Performance Warranty**

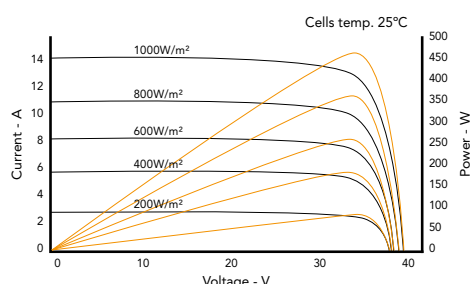
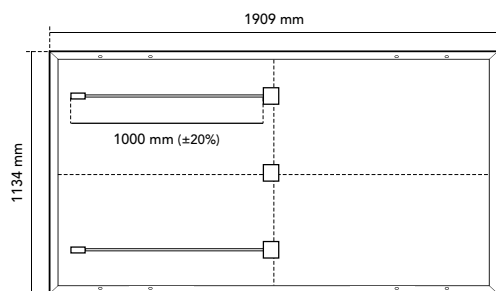
Linear Warranty

88% performance at 30 years





## Eurener MEPV 120 — NEXA Bif 475-480Wp



### Mechanical Specification

Solar cells	120 (6 x 20), N-Type bifacial monocrystalline silicon cells
Front Glass	2mm anti-reflective surface solar glass
Back Glass	2mm solar glass
Frame	Black/silver anodized aluminium
Junction Box	IP68, 3 by-pass diodes
Connector	Original MC4-Evo 2
Cable	1000 mm (±20%) length and 4 mm² section
Dimension	1909 x 1134 x 30 mm (±1%)
Area	2,16 m²
Weight and packaging	25,9 kg, 864 pcs-truck

### Temperature Coefficients

Temperature coefficient of $I_{sc}$ ( $\alpha$ )	0,045 %/°C
Temperature coefficient of $V_{oc}$ ( $\beta$ )	-0,275 %/°C
Temperature coefficient of $P_{max}$ ( $\gamma$ )	-0,29 %/°C
Temperature range	-40 °C ~ +85 °C
Nominal operating cell temperature (NOCT)	45 ± 2 °C

Black - Standard	MEPV 475	MEPV 480
<b>STC: 1000 W/m², module temperature 25°C, AM 1,5</b>		
Nominal power. $P_{max}$	475 Wp	480 Wp
Module efficiency	21,95 %	22,18 %
Short-circuit current ( $I_{sc}$ )	14,24 A	14,34 A
Open-circuit voltage ( $V_{oc}$ )	42,53 V	42,63 V
Maximum power current ( $I_{mp}$ )	13,50 A	13,60 A
Maximum power voltage ( $V_{mp}$ )	35,20 V	35,31 V
<b>NOCT: 800 W/m², ambient temperature 20°C, AM 1,5</b>		
Nominal power. $P_{max}$	357,14 W	360,97 W
Short-circuit current ( $I_{sc}$ )	11,49 A	11,55 A
Open-circuit voltage ( $V_{oc}$ )	40,41 V	40,57 V
Maximum power current ( $I_{mp}$ )	10,79 A	10,85 A
Maximum power voltage ( $V_{mp}$ )	33,10 V	33,27 V
<b>Electrical characteristics with 10% rear side power gain</b>		
Nominal power. $P_{max}$	522,50 W	528,0 W
Short-circuit current ( $I_{sc}$ )	15,61 A	15,72 A
Open-circuit voltage ( $V_{oc}$ )	42,56 V	42,71 V
Maximum power current ( $I_{mp}$ )	14,81 A	14,91 A
Maximum power voltage ( $V_{mp}$ )	35,29 V	35,41 V
<b>Operating parameters</b>		
Maximum voltage	1000 - 1500 V	
Maximum series fuse rating. $I_r$	25 A	
Power output tolerance	0 - +3%	
$V_{oc}$ and $I_{sc}$ tolerance	±3%	
Fire rating	Class A (UL 790)	
Protection class	Class II (IEC 61140)	
Hail resistance	Ø 25mm at 23 m/s (IEC 61215)	
Mechanical loads	Front load 5400 Pa, Back load 2400 Pa	

NOTE: Read the instruction manual of this product and follow the indications STC. Values are valid for: 1000W/m², AM 1,5 and cells temperature of 25°C. Measurement tolerance +/-3% (AAA Solar simulation -IEC 60.904-9-). All the information of this brochure may be amended without notice by Eurener.

Eurener\_MEPV 120\_NEXA Bif\_475-480Wp\_EN\_JAN2024

**SINCE**  
**1997**  
more than  
energy



**eurener.com**  
contact@eurenerworld.com  
+34 960 045 515  
Calle Colón, 1-23  
46004, Valencia. Spain

### Manufacturing a better world

Since 1997 our main purpose has been to supply quality and long-lasting photovoltaic modules that allow us and future generations, to continue generating clean energy to take care of our planet.



# Nexa Plus

MEPV 144 cells — Eurener PV Module

› 570/575/580Wp



## N-type cell

Higher resistance to LID and LeTID



## TOPCon

Technology to increase cell efficiency



## SuperMBB

Reduced resistance losses and improved current collection



## Better temperature coefficient

Minimized thermal losses, improved efficiency



## Increased PV surface

Higher power output



## Increased resistance

High ammonia resistance



**20 Years**

Product Warranty

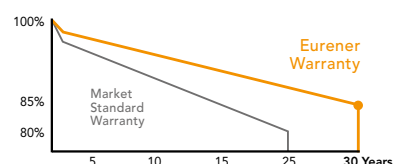
+5 years for Premium Partners

**30 Years**

Performance Warranty

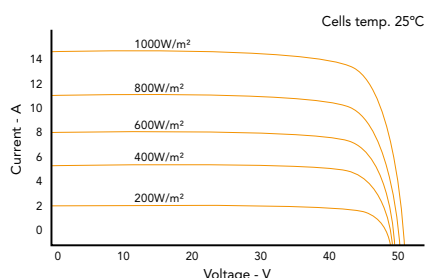
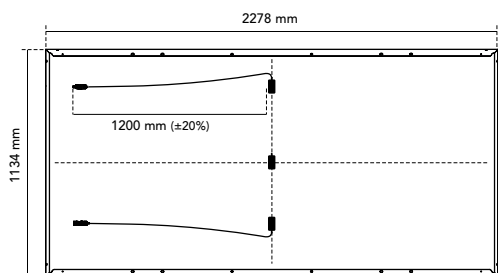
Linear Warranty

85% performance at 30 years





## Eurener MEPV 144 — NEXA Plus 570-580Wp



### Mechanical Specification

Solar cells	144 (6 x 24), N-Type monocrystalline silicon cells
Front Glass	3,2 mm thick tempered glass with high strength and ARC
Frame	Black/silver anodized aluminium
Junction Box	IP68, 3 by-pass diodes
Connector	Connector MC4 compatible
Cable	1200 mm (±20%) length and 4 mm² section
Dimension	2278 x 1134 x 35 mm (±1%)
Area	2,58 m²
Weight and packaging	28 kg, 620 pcs-truck

### Temperature Coefficients

Temperature coefficient of Isc ( $\alpha$ )	0,045 %/°C
Temperature coefficient of Voc ( $\beta$ )	-0,275 %/°C
Temperature coefficient of Pmax ( $\gamma$ )	-0,29 %/°C
Temperature range	-40 °C ~ +85 °C
Nominal operating cell temperature (NOCT)	45 ± 2 °C

Standard - Black	MEPV 570	MEPV 575	MEPV 580
<b>STC: 1000 W/m², module temperature 25°C, AM 1,5</b>			
Nominal power. Pmax	570 Wp	575 Wp	580 Wp
Module efficiency	22,03%	22,29%	22,47%
Short-circuit current (Isc)	14,27 A	14,42 A	14,49 A
Open-circuit voltage (Voc)	50,67 V	50,86 V	51,07 V
Maximum power current (Imp)	13,52 A	13,61 A	13,70 A
Maximum power voltage (Vmp)	42,16 V	42,25 V	42,35 V
<b>NOCT: 800 W/m², ambient temperature 20°C, AM 1,5</b>			
Nominal power. Pmax	429 Wp	432 Wp	436 Wp
Short-circuit current (Isc)	11,56 A	11,61 A	11,69 A
Open-circuit voltage (Voc)	48,26 V	48,28 V	48,38 V
Maximum power current (Imp)	10,88 A	10,89 A	10,99 A
Maximum power voltage (Vmp)	39,41 V	39,68 V	39,70 V
<b>Operating parameters</b>			
Maximum voltage	1000 - 1500 V		
Maximum series fuse rating. Ir	25 A		
Power output tolerance	0 - +3%		
Voc and Isc tolerance	±3%		
Fire rating	Class C (UL 790)		
Protection class	Class II (IEC 61140)		
Hail resistance	HW3/RG3		
Mechanical loads	Front load 5400 Pa, Back load 2400 Pa		

NOTE: Read the instruction manual of this product and follow the indications STC. Values are valid for: 1000W/m², AM 1,5 and cells temperature of 25°C. Measurement tolerance +/-3% (AAA Solar simulation -IEC 60.904-9-). All the information of this brochure may be amended without notice by Eurener.

Eurener\_MEPV 144\_NEXA Plus\_570-580Wp\_EN\_JAN2024

**SINCE**  
**1997**  
more than  
energy



**eurener.com**  
contact@eurenerworld.com  
+34 960 045 515  
Calle Colón, 1-23  
46004, Valencia. Spain

### Manufacturing a better world

Since 1997 our main purpose has been to supply quality and long-lasting photovoltaic modules that allow us and future generations, to continue generating clean energy to take care of our planet.



MORE THAN  
ENERGY





## MEPV ULTRA Series

✧ *Pure power. Pure elegance*

Solar elegance redefined. Bring sophistication to your home with our exclusive full-black solar panels designed for architectural integration. Groundbreaking technology, superior warranties, and higher efficiency for your property.



# MEPV ULTRA

From 400 to 460Wp



## Optimized area (<2m<sup>2</sup>)

Perfect size for comfortable installations and easy handling.

Maintaining suitable power outputs.



## N-type cell

Due to their composition, offer higher performance and efficiency than P-type cells and reduce the LID and LeTID effects.



## Back contact technology

Removing busbars from the front side reduces the effect of shadows on the solar cell.



## Premium integration

Total black appearance for a perfect commercial and residential rooftop integration.



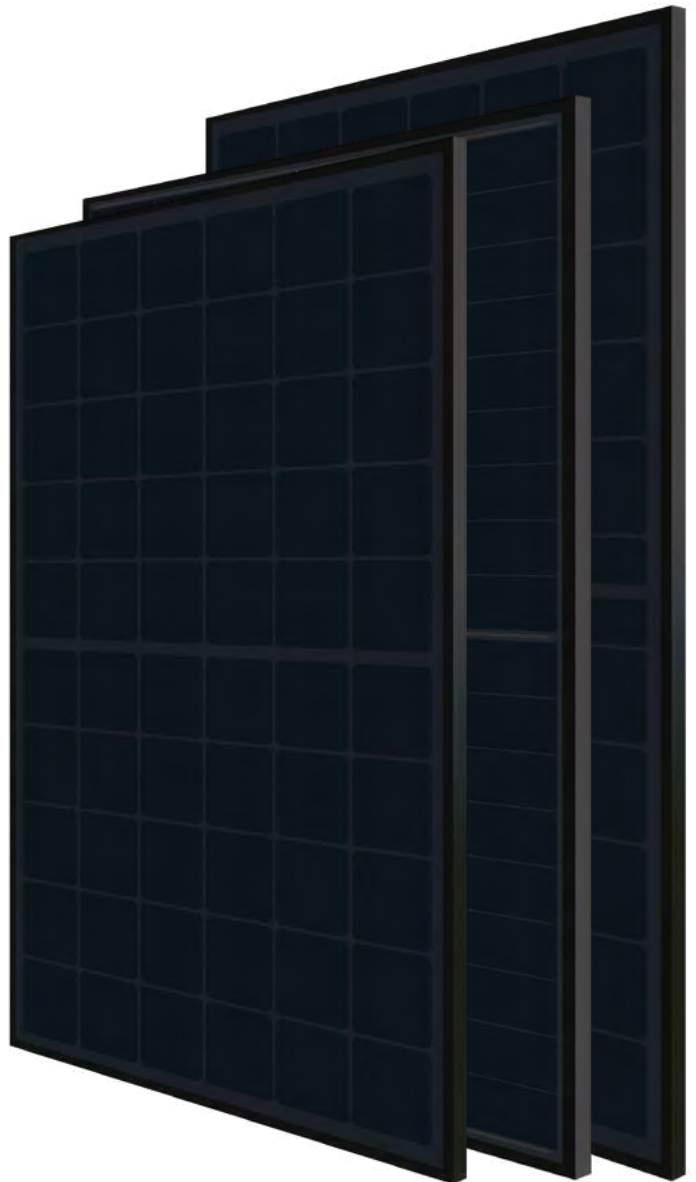
## Lower temperature impact

Modules with better temperature coefficient that reduces thermal losses and improves efficiency in hot climates.



## Elegant design

Cells free from frontal metallization offer a clean view of the module.





## **MEPV ULTRA Series**

### ▸ DATA SHEETS

- Eurener MEPV 120 ULTRA 400Wp  
*pag. 23/24*
- Eurener MEPV 132 ULTRA 440Wp  
*pag. 25/26*
- Eurener MEPV 108 ULTRA 450-460Wp  
*pag. 27/28*

# Ultra

MEPV 120 cells — Eurener PV Module

› 400Wp



## N-type cell

Higher resistance to LID and LeTID



## Back contact technology

Improved energy yield by reducing BB shadowing



## Better temperature coefficient

Minimized thermal losses, improved efficiency



## Easy to handle

Comfortable installation thanks to an optimized area size



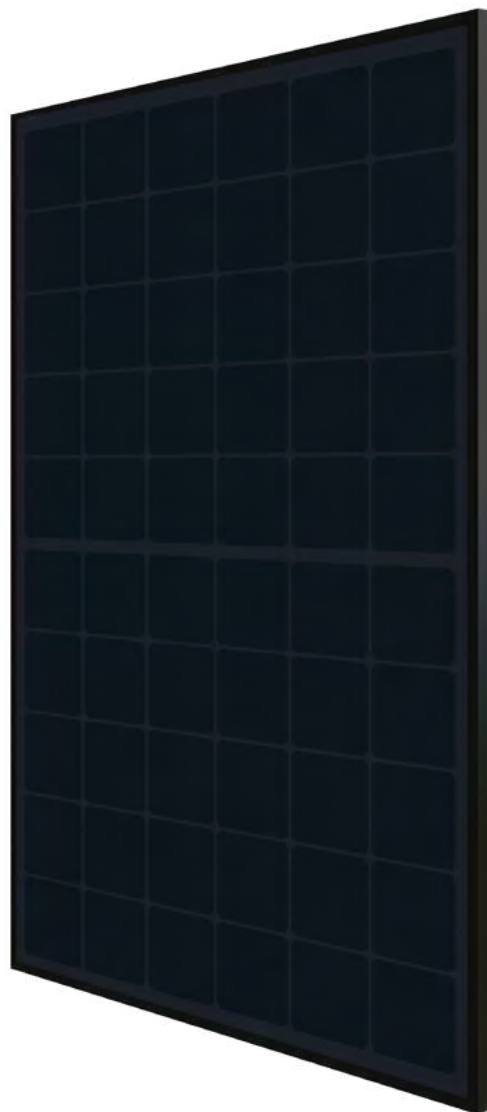
## Premium aesthetic

Commercial and residential rooftop integration



## Elegant design

Cells free from frontal metallization



**20 Years**

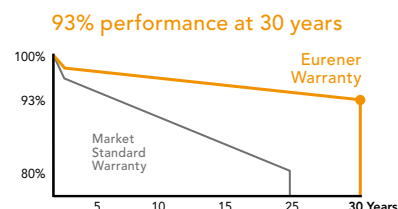
**Product Warranty**

+5 years for Premium Partners

**30 Years**

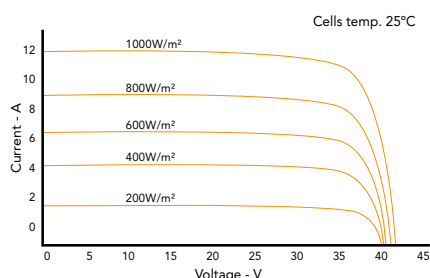
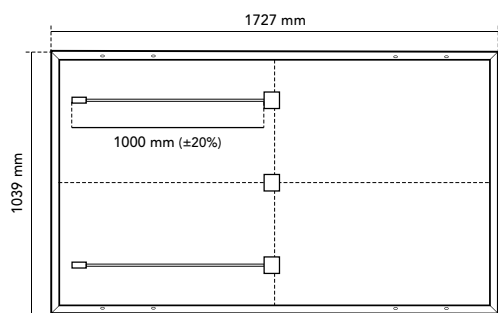
**Performance Warranty**

Linear Warranty





## Eurener MEPV 120 — ULTRA 400Wp



### Mechanical Specification

Solar cells	120 (6 x 20), N-Type monocrystalline silicon cells
Front Glass	3,2 mm thick tempered glass with high strength and ARC
Frame	Black anodized aluminium
Junction Box	IP68, 3 by-pass diodes
Connector	Original MC4-Evo 2
Cable	1000 mm (±20%) length and 4 mm² section
Dimension	1727 x 1039 x 30 mm (±1%)
Area	1,79 m²
Weight and packaging	20 kg, 949 pcs-truck

### Temperature Coefficients

Temperature coefficient of Isc ( $\alpha$ )	0,045 %/°C
Temperature coefficient of Voc ( $\beta$ )	-0,247 %/°C
Temperature coefficient of Pmax ( $\gamma$ )	-0,290 %/°C
Temperature range	-40 °C ~ +85 °C
Nominal operating cell temperature (NOCT)	43 ± 2 °C

### Black

### MEPV 400

STC: 1000 W/m², module temperature 25°C, AM 1,5

Nominal power. Pmax	400 Wp
Module efficiency	22,31 %
Short-circuit current (Isc)	12,05 A
Open-circuit voltage (Voc)	42,10 V
Maximum power current (Imp)	11,09 A
Maximum power voltage (Vmp)	36,10 V

NOCT: 800 W/m², ambient temperature 20°C, AM 1,5

Nominal power. Pmax	306,52 W
Short-circuit current (Isc)	9,72 A
Open-circuit voltage (Voc)	40,23 V
Maximum power current (Imp)	8,96 A
Maximum power voltage (Vmp)	34,23 V

### Operating parameters

Maximum voltage	1500 V
Maximum series fuse rating. Ir	20 A
Power output tolerance	0 - +3%
Voc and Isc tolerance	±3%
Fire rating	Class C (UL 790)
Protection class	Class II (IEC 61140)
Hail resistance	HW3/RG3
Mechanical loads	Front load 5400 Pa, Back load 2400 Pa

NOTE: Read the instruction manual of this product and follow the indications STC. Values are valid for: 1000W/m², AM 1,5 and cells temperature of 25°C. Measurement tolerance +/-3% (AAA Solar simulation -IEC 60.904-9-). All the information of this brochure may be amended without notice by Eurener.  
Eurener\_MEPV 120\_ULTRA\_400Wp\_EN\_JAN2024

**SINCE**  
**1997**  
more than  
energy



**eurener.com**  
**contact@eurenerworld.com**  
+34 960 045 515  
Calle Colón, 1-23  
46004, Valencia. Spain

### Manufacturing a better world

Since 1997 our main purpose has been to supply quality and long-lasting photovoltaic modules that allow us and future generations, to continue generating clean energy to take care of our planet.



# Ultra

MEPV 132 cells — Eurener PV Module

› 440Wp



## N-type cell

Higher resistance to LID and LeTID



## Back contact technology

Improved energy yield by reducing BB shadowing



## Better temperature coefficient

Minimized thermal losses, improved efficiency



## Easy to handle

Comfortable installation thanks to an optimized area size



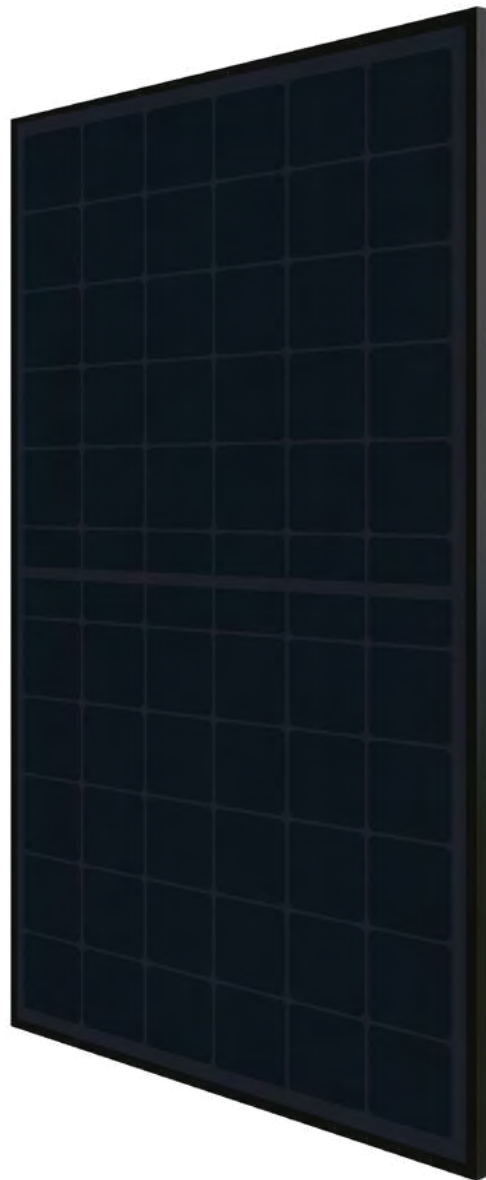
## Premium aesthetic

Commercial and residential rooftop integration



## Elegant design

Cells free from frontal metallization



**20** Years

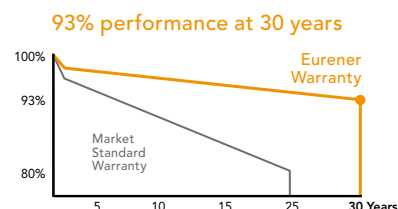
Product Warranty

+5 years for Premium Partners

**30** Years

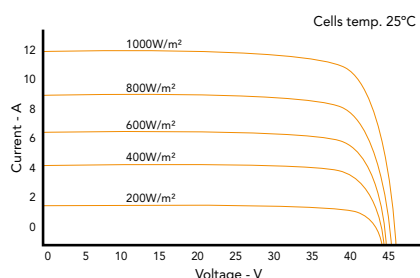
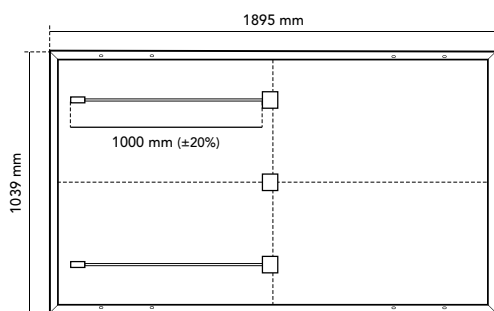
Performance Warranty

Linear Warranty





## Eurener MEPV 132 — ULTRA 440Wp



### Mechanical Specification

Solar cells	132 (6 x 22), N-Type monocrystalline silicon cells
Front Glass	3,2 mm thick tempered glass with high strength and ARC
Frame	Black anodized aluminium
Junction Box	IP68, 3 by-pass diodes
Connector	Original MC4-Evo 2
Cable	1000 mm (±20%) length and 4 mm² section
Dimension	1895 x 1039 x 30 mm (±1%)
Area	1,97 m²
Weight and packaging	21 kg, 900 pcs-truck

### Temperature Coefficients

Temperature coefficient of Isc ( $\alpha$ )	0,045 %/°C
Temperature coefficient of Voc ( $\beta$ )	-0,247 %/°C
Temperature coefficient of Pmax ( $\gamma$ )	-0,290 %/°C
Temperature range	-40 °C ~ +85 °C
Nominal operating cell temperature (NOCT)	43 ± 2 °C

### Black

### MEPV 440

#### STC: 1000 W/m², module temperature 25°C, AM 1,5

Nominal power. Pmax	440 Wp
Module efficiency	22,37 %
Short-circuit current (Isc)	12,06 A
Open-circuit voltage (Voc)	46,30 V
Maximum power current (Imp)	11,12 A
Maximum power voltage (Vmp)	39,60 V

#### NOCT: 800 W/m², ambient temperature 20°C, AM 1,5

Nominal power. Pmax	337,10 W
Short-circuit current (Isc)	9,73 A
Open-circuit voltage (Voc)	44,24 V
Maximum power current (Imp)	8,98 A
Maximum power voltage (Vmp)	37,54 V

#### Operating parameters

Maximum voltage	1500 V
Maximum series fuse rating. Ir	20 A
Power output tolerance	0 - +3%
Voc and Isc tolerance	±3%
Fire rating	Class C (UL 790)
Protection class	Class II (IEC 61140)
Hail resistance	HW3/RG3
Mechanical loads	Front load 5400 Pa, Back load 2400 Pa

NOTE: Read the instruction manual of this product and follow the indications STC. Values are valid for: 1000W/m², AM 1,5 and cells temperature of 25°C. Measurement tolerance +/-3% (AAA Solar simulation -IEC 60.904-9-). All the information of this brochure may be amended without notice by Eurener.  
Eurener\_MEPV 132\_ULTRA\_440Wp\_EN\_JAN2024

**SINCE**  
**1997**  
more than  
energy



**eurener.com**  
contact@eurenerworld.com  
+34 960 045 515  
Calle Colón, 1-23  
46004, Valencia. Spain

### Manufacturing a better world

Since 1997 our main purpose has been to supply quality and long-lasting photovoltaic modules that allow us and future generations, to continue generating clean energy to take care of our planet.

# Ultra

MEPV 108 cells — Eurener PV Module

› 450/460Wp



## N-type cell

Higher resistance to LID and LeTID



## Back contact technology

Improved energy yield by reducing BB shadowing



## Premium aesthetic

Commercial and residential rooftop integration



## Easy to handle

Comfortable installation thanks to an optimized area size



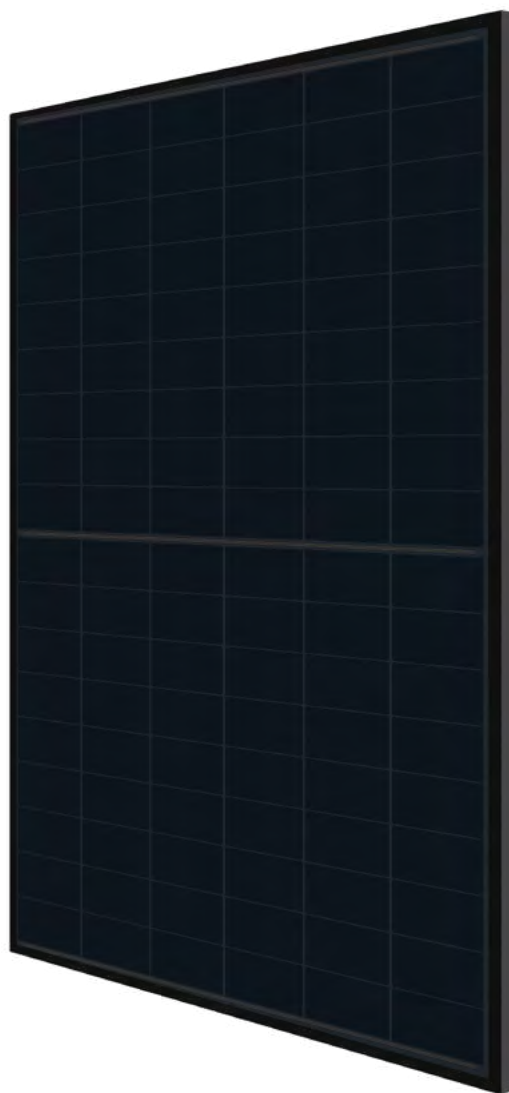
## Better temperature coefficient

Minimized thermal losses, improved efficiency



## Elegant design

Cells free from frontal metallization



**20 Years**

**Product Warranty**

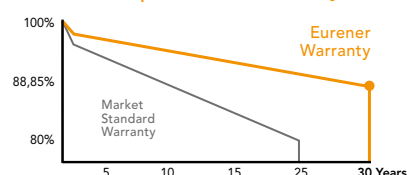
+5 years for Premium Partners

**30 Years**

**Performance Warranty**

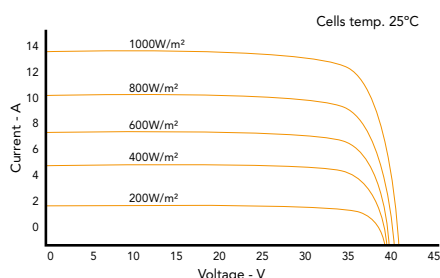
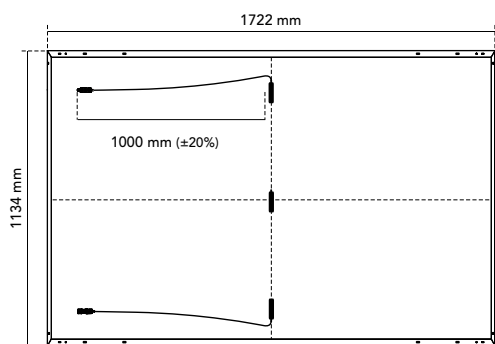
Linear Warranty

88,85% performance at 30 years





## Eurener MEPV 108 — ULTRA 450-460Wp



### Mechanical Specification

Solar cells	108 (6 x 18), N-Type monocrystalline silicon cells
Front Glass	3,2 mm thick tempered glass with high strength and ARC
Frame	Black anodized aluminium
Junction Box	IP68, 3 by-pass diodes
Connector	Original MC4-Evo 2
Cable	1000 mm (±20%) length and 4 mm² section
Dimension	1722 x 1134 x 30 mm (±1%)
Area	1,95 m²
Weight and packaging	20,5 kg, 936 pcs-truck

### Temperature Coefficients

Temperature coefficient of $I_{sc}$ ( $\alpha$ )	0,05 %/°C
Temperature coefficient of $V_{oc}$ ( $\beta$ )	-0,24 %/°C
Temperature coefficient of $P_{max}$ ( $\gamma$ )	-0,29 %/°C
Temperature range	-40 °C ~ +85 °C
Nominal operating cell temperature (NOCT)	43 ± 2 °C

Black	MEPV 450	MEPV 460
<b>STC: 1000 W/m², module temperature 25°C, AM 1,5</b>		
Nominal power. $P_{max}$	450 Wp	460 Wp
Module efficiency	22,98 %	23,63 %
Short-circuit current ( $I_{sc}$ )	13,74 A	13,91 A
Open-circuit voltage ( $V_{oc}$ )	40,24 V	40,40 V
Maximum power current ( $I_{mp}$ )	13,21 A	13,47 A
Maximum power voltage ( $V_{mp}$ )	34,10 V	34,20 V
<b>NOCT: 800 W/m², ambient temperature 20°C, AM 1,5</b>		
Nominal power. $P_{max}$	339 Wp	347 Wp
Short-circuit current ( $I_{sc}$ )	11,16 A	11,24 A
Open-circuit voltage ( $V_{oc}$ )	37,84 V	38,00 V
Maximum power current ( $I_{mp}$ )	10,64 A	10,76 A
Maximum power voltage ( $V_{mp}$ )	31,94 V	32,27 V
<b>Operating parameters</b>		
Maximum voltage	1500 V	
Maximum series fuse rating. $I_r$	25 A	
Power output tolerance	0 - +3%	
$V_{oc}$ and $I_{sc}$ tolerance	±3%	
Fire rating	Class C (UL 790)	
Protection class	Class II (IEC 61140)	
Hail resistance	HW3/RG3	
Mechanical loads	Front load 5400 Pa, Back load 2400 Pa	

NOTE: Read the instruction manual of this product and follow the indications STC. Values are valid for: 1000W/m², AM 1,5 and cells temperature of 25°C. Measurement tolerance +/-3% (AAA Solar simulation -IEC 60.904-9-). All the information of this brochure may be amended without notice by Eurener.

Eurener\_MEPV 108\_ULTRA\_450-460Wp\_EN\_JAN2024

**SINCE**  
**1997**  
more than  
energy



**eurener.com**  
contact@eurenerworld.com  
+34 960 045 515  
Calle Colón, 1-23  
46004, Valencia. Spain

### Manufacturing a better world

Since 1997 our main purpose has been to supply quality and long-lasting photovoltaic modules that allow us and future generations, to continue generating clean energy to take care of our planet.





MORE THAN  
ENERGY



## MEPV ICON Series

✎ *Versatile, reliable, timeless*

Manufactured in a wide range of finishes, this iconic solar module sets the industry standard. Designed to fit any installation, its multiple power options and sizes make it the perfect choice for any solar requirement.

# MEPV ICON

from 340 to 420Wp



## Half cut technology

The parallel connection of the half-cell modules maintains production when one of the parts is shaded.

This increases efficiency and reliability reducing the appearing of hot spots and dismisin cell degradation.



## Improved energy yield under unfavourable conditions

Cells capable of absorbing light during dawn and sunset.

Better response to diffuse light (dusty or cloudy skies).



## Optimized area (<2m²)

Perfect size for comfortable installations and easy handling.

Maintaining suitable power outputs.



## Versatile and cost-effective modules

Technology that fits residential, industrial and large installations with customizable aesthetics (black, silver or bicolor).



## Resistance against PID

Certified according to IEC TS 62804-1:2015 standards.





# MEPV ICON PLUS

from 450 to 550Wp



## Half cut technology

The parallel connection of the half-cell modules maintains production when one of the parts is shaded.

This increases efficiency and reliability reducing the appearing of hot spots and dismisin cell degradation.



## Improved energy yield under unfavourable conditions

Cells capable of absorbing light during dawn and sunset.

Better response to diffuse light (dusty or cloudy skies).



## High reliability

PID resistance, certified according to IEC TS 62804-1:2015 standards

Salt mist resistance, certified according to IEC 61701:2020 standards.

Ammonia resistance, certified according to IEC 62716:2013 and EN 62716:2013 standards.



## Enhanced power output

Modules with bigger PV areas and a higher number of cells per module significantly increasing the power output.



## High production for demanding projects

Perfect modules for PV power stations and other kind of large installations.





# MEPV ICON PLUS BIF

## 550W<sub>p</sub>



### Half cut technology

The parallel connection of the half-cell modules maintains production when one of the parts is shaded.

This increases efficiency and reliability reducing the appearing of hot spots and dismisin cell degradation.



### Improved energy yield under unfavourable conditions

Cells capable of absorbing light during dawn and sunset.

Better response to diffuse light (dusty or cloudy skies).



### Resistance against PID

Certified according to IEC TS 62804-1:2015 standards.



### Enhanced power output

Modules with bigger PV areas and a higher number of cells per module significantly increasing the power output.



### High production for demanding projects

Perfect modules for PV power stations and other kind of large installations.



### Bifacial

Bifaciality effectively improves rear power generation with more than a 10% increase in the output compared to having only a monofacial side.





## MEPV ICON Series

### DATA SHEETS

#### MEPV ICON from 340 to 420Wp

- › Eurener MEPV 120 ICON 340Wp  
*pag. 35/36*
- › Eurener MEPV 120 ICON 375-380Wp  
*pag. 37/38*
- › Eurener MEPV 108 ICON 400-420Wp  
*pag. 39/40*

#### MEPV ICON PLUS from 450 to 550Wp

- › Eurener MEPV 144 ICON Plus 450-460Wp  
*pag. 41/42*
- › Eurener MEPV 132 ICON Plus 500Wp  
*pag. 43/44*
- › Eurener MEPV 144 ICON Plus 550Wp  
*pag. 45/46*

#### MEPV ICON PLUS BIF 550Wp

- › Eurener MEPV 144 ICON Plus Bif 550Wp  
*pag. 47/48*

# Icon

MEPV 120 cells — Eurener PV Module

› 340Wp



## Anti-PID

Ensured PID resistance



## Easy to handle

Comfortable installation thanks to an optimized area size



## Wider irradiance range

Improved performance under dawn, sunset and cloudy skies



## Half cut technology

Better shading tolerance



## High temperature performance

Better energy yield on sunny days



## Customizable

Wide range of finishing options for all types of projects



**20 Years**

Product Warranty

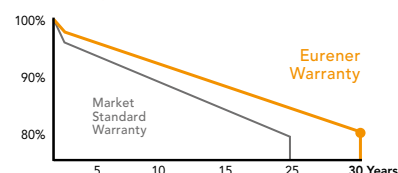
+5 years for Premium Partners

**30 Years**

Performance Warranty

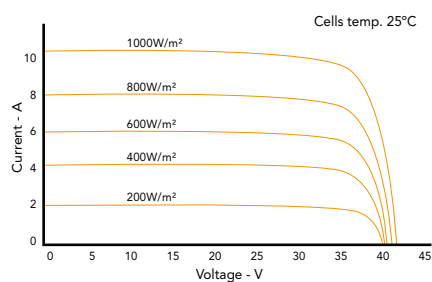
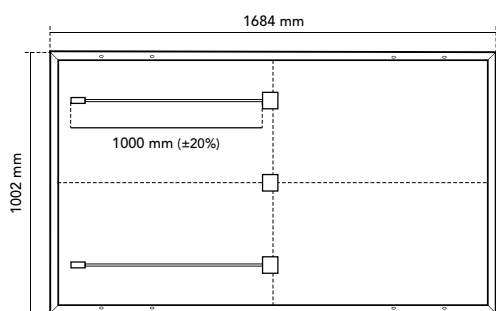
Linear Warranty

80% performance at 30 years





## Eurener MEPV 120 — ICON 340Wp



### Mechanical Specification

Solar cells	120 (6 x 20), monocrystalline silicon cells
Front Glass	3,2 mm thick tempered glass with high strength and ARC
Frame	Black / Silver anodized aluminium
Junction Box	IP68, 3 by-pass diodes
Connector	Connector MC4 compatible
Cable	1000 mm (±20%) length and 4 mm² section
Dimension	1684 x 1002 x 35 mm (±1%)
Area	1,69 m²
Weight and packaging	18 kg, 858 pcs-truck

### Temperature Coefficients

Temperature coefficient of Isc ( $\alpha$ )	0,04 %/°C
Temperature coefficient of Voc ( $\beta$ )	-0,26 %/°C
Temperature coefficient of Pmax ( $\gamma$ )	-0,36 %/°C
Temperature range	-40 °C ~ +85 °C
Nominal operating cell temperature (NOCT)	41 ± 3 °C

### Black - Standard - Bicolour

### MEPV 340

STC: 1000 W/m2, module temperature 25°C, AM 1,5

Nominal power. Pmax	340 Wp
Module efficiency	21,17 %
Short-circuit current (Isc)	10,26 A
Open-circuit voltage (Voc)	43,00 V
Maximum power current (Imp)	9,75 A
Maximum power voltage (Vmp)	34,90 V

NOCT: 800 W/m2, ambient temperature 20°C, AM 1,5

Nominal power. Pmax	260,01 W
Short-circuit current (Isc)	8,26 A
Open-circuit voltage (Voc)	41,21 V
Maximum power current (Imp)	7,85 A
Maximum power voltage (Vmp)	33,11 V

### Operating parameters

Maximum voltage	1000 - 1500 V
Maximum series fuse rating. Ir	20 A
Power output tolerance	0 - +3%
Voc and Isc tolerance	±3%
Fire rating	Class C (UL 790)
Protection class	Class II (IEC 61140)
Hail resistance	HW3/RG3
Mechanical loads	Front load 5400 Pa, Back load 2400 Pa

NOTE: Read the instruction manual of this product and follow the indications STC. Values are valid for: 1000W/m², AM 1,5 and cells temperature of 25°C. Measurement tolerance +/-3% (AAA Solar simulation -IEC 60.904-9-). All the information of this brochure may be amended without notice by Eurener.

Eurener\_MEPV 120\_ICON\_340Wp\_EN\_JAN2024

**SINCE**  
**1997**  
more than  
energy



**eurener.com**  
**contact@eurenerworld.com**  
**+34 960 045 515**  
**Calle Colón, 1-23**  
**46004, Valencia. Spain**

### Manufacturing a better world

Since 1997 our main purpose has been to supply quality and long-lasting photovoltaic modules that allow us and future generations, to continue generating clean energy to take care of our planet.



# Icon

MEPV 120 cells — Eurener PV Module

› 375/380Wp



## Anti-PID

Ensured PID resistance



## Easy to handle

Comfortable installation thanks to an optimized area size



## Wider irradiance range

Improved performance under dawn, sunset and cloudy skies



## Half cut technology

Better shading tolerance



## High temperature performance

Better energy yield on sunny days



## Customizable

Wide range of finishing options for all types of projects



**20 Years**

**Product Warranty**

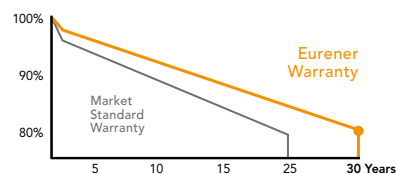
+5 years for Premium Partners

**30 Years**

**Performance Warranty**

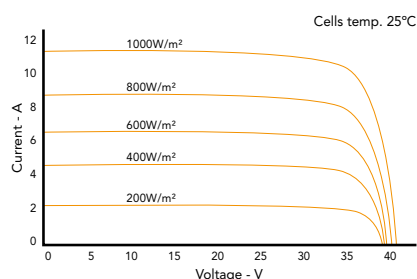
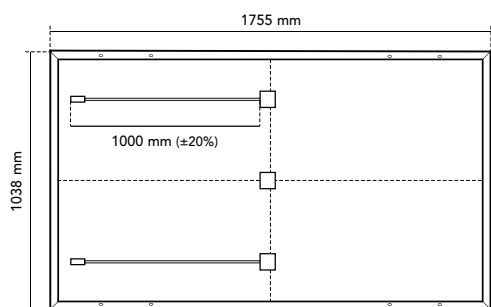
Linear Warranty

80% performance at 30 years





## Eurener MEPV 120 — ICON 375-380Wp



### Mechanical Specification

Solar cells	120 (6 x 20), monocrystalline silicon cells
Front Glass	3,2 mm thick tempered glass with high strength and ARC
Frame	Black / Silver anodized aluminium
Junction Box	IP68, 3 by-pass diodes
Connector	Connector MC4 compatible
Cable	1000 mm (±20%) length and 4 mm² section
Dimension	1755 x 1038 x 35 mm (±1%)
Area	1,82 m²
Weight and packaging	19,2 kg, 858 pcs-truck

### Temperature Coefficients

Temperature coefficient of $I_{sc}$ ( $\alpha$ )	0,041 %/°C
Temperature coefficient of $V_{oc}$ ( $\beta$ )	-0,295 %/°C
Temperature coefficient of $P_{max}$ ( $\gamma$ )	-0,37 %/°C
Temperature range	-40 °C ~ +85 °C
Nominal operating cell temperature (NOCT)	43 ± 3 °C

### Black - Standard - Bicolour

### MEPV 375

### MEPV 380

#### STC: 1000 W/m², module temperature 25°C, AM 1,5

Nominal power. $P_{max}$	375 Wp	380 Wp
Module efficiency	20,61 %	20,87 %
Short-circuit current ( $I_{sc}$ )	11,46 A	11,55 A
Open-circuit voltage ( $V_{oc}$ )	41,50 V	41,70 V
Maximum power current ( $I_{mp}$ )	10,95 A	11,03 A
Maximum power voltage ( $V_{mp}$ )	34,28 V	34,47 V

#### NOCT: 800 W/m², ambient temperature 20°C, AM 1,5

Nominal power. $P_{max}$	283,16 W	286,82 W
Short-circuit current ( $I_{sc}$ )	9,24 A	9,31 A
Open-circuit voltage ( $V_{oc}$ )	39,30 V	39,49 V
Maximum power current ( $I_{mp}$ )	8,83 A	8,89 A
Maximum power voltage ( $V_{mp}$ )	32,08 V	32,26 V

### Operating parameters

Maximum voltage	1000 - 1500 V
Maximum series fuse rating. $I_r$	20 A
Power output tolerance	0 - +3%
$V_{oc}$ and $I_{sc}$ tolerance	±3%
Fire rating	Class C (UL 790)
Protection class	Class II (IEC 61140)
Hail resistance	HW3/RG3
Mechanical loads	Front load 5400 Pa, Back load 2400 Pa

NOTE: Read the instruction manual of this product and follow the indications STC. Values are valid for: 1000W/m², AM 1,5 and cells temperature of 25°C. Measurement tolerance +/-3% (AAA Solar simulation -IEC 60.904-9-). All the information of this brochure may be amended without notice by Eurener.

Eurener\_MEPV 120\_ICON\_375-380Wp\_EN\_JAN2024

**SINCE**  
**1997**  
more than  
energy



**eurener.com**  
**contact@eurenerworld.com**  
**+34 960 045 515**  
**Calle Colón, 1-23**  
**46004, Valencia. Spain**

### Manufacturing a better world

Since 1997 our main purpose has been to supply quality and long-lasting photovoltaic modules that allow us and future generations, to continue generating clean energy to take care of our planet.

# Icon

MEPV 108 cells — Eurener PV Module

› 400/410/415/420Wp



## Increased resistance

High salt mist and ammonia resistance



## Anti-PID

Ensured PID resistance



## Wider irradiance range

Improved performance under dawn, sunset and cloudy skies



## Half cut technology

Better shading tolerance



## Easy to handle

Comfortable installation thanks to an optimized area size



## Customizable

Wide range of finishing options for all types of projects



**20 Years**

**Product Warranty**

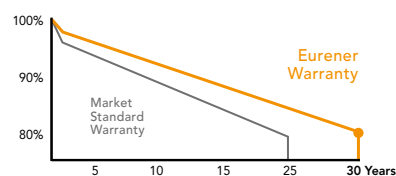
+5 years for Premium Partners

**30 Years**

**Performance Warranty**

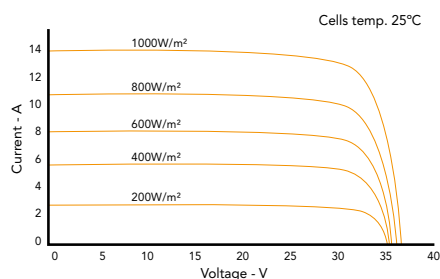
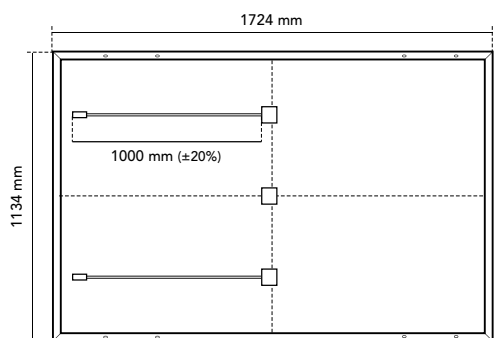
Linear Warranty

80% performance at 30 years





## Eurener MEPV 108 — ICON 400-420Wp



### Mechanical Specification

Solar cells	108 (6 x 18), monocrystalline silicon cells
Front Glass	3,2 mm thick tempered glass with high strength and ARC
Frame	Black / Silver anodized aluminium
Junction Box	IP68, 3 by-pass diodes
Connector	Connector MC4 compatible
Cable	1000 mm (±20%) length and 4 mm² section
Dimension	1724 x 1134 x 30 mm (±1%)
Area	1,96 m²
Weight and packaging	21,5 kg, 962/936 pcs-truck

### Temperature Coefficients

Temperature coefficient of $I_{sc}$ ( $\alpha$ )	0,044 %/°C
Temperature coefficient of $V_{oc}$ ( $\beta$ )	-0,276 %/°C
Temperature coefficient of $P_{max}$ ( $\gamma$ )	-0,35 %/°C
Temperature range	-40 °C ~ +85 °C
Nominal operating cell temperature (NOCT)	45 ± 2 °C

Black - Standard - Bicolour	MEPV 400	MEPV 410	MEPV 415	MEPV 420 STANDARD ONLY
<b>STC: 1000 W/m², module temperature 25°C, AM 1,5</b>				
Nominal power. $P_{max}$	400 Wp	410 Wp	415 Wp	420 Wp
Module efficiency	20,46 %	20,98 %	21,23 %	21,49 %
Short-circuit current ( $I_{sc}$ )	13,79 A	13,95 A	14,02 A	14,10 A
Open-circuit voltage ( $V_{oc}$ )	37,07 V	37,32 V	37,45 V	37,57 V
Maximum power current ( $I_{mp}$ )	12,90 A	13,04 A	13,13 A	13,21 A
Maximum power voltage ( $V_{mp}$ )	31,01 V	31,45 V	31,61 V	31,81 V
<b>NOCT: 800 W/m², ambient temperature 20°C, AM 1,5</b>				
Nominal power. $P_{max}$	301,72 W	309,48 W	313,23 W	317,20 W
Short-circuit current ( $I_{sc}$ )	11,13 A	11,26 A	11,31 A	11,38 A
Open-circuit voltage ( $V_{oc}$ )	35,02 V	35,26 V	35,38 V	35,50 V
Maximum power current ( $I_{mp}$ )	10,42 A	10,53 A	10,60 A	10,67 A
Maximum power voltage ( $V_{mp}$ )	28,96 V	29,39 V	29,54 V	29,74 V
<b>Operating parameters</b>				
Maximum voltage	1000 - 1500 V			
Maximum series fuse rating. $I_r$	25 A			
Power output tolerance	0 - +3%			
$V_{oc}$ and $I_{sc}$ tolerance	±3%			
Fire rating	Class C (UL 790)			
Protection class	Class II (IEC 61140)			
Hail resistance	HW3/RG3			
Mechanical loads	Front load 5400 Pa, Back load 2400 Pa			

NOTE: Read the instruction manual of this product and follow the indications STC. Values are valid for: 1000W/m², AM 1,5 and cells temperature of 25°C. Measurement tolerance +/-3% (AAA Solar simulation -IEC 60.904-9-). All the information of this brochure may be amended without notice by Eurener.

Eurener\_MEPV 108\_ICON 400-420Wp\_EN\_JAN2024

**SINCE**  
**1997**  
more than  
energy



**eurener.com**  
contact@eurenerworld.com  
+34 960 045 515  
Calle Colón, 1-23  
46004, Valencia. Spain

### Manufacturing a better world

Since 1997 our main purpose has been to supply quality and long-lasting photovoltaic modules that allow us and future generations, to continue generating clean energy to take care of our planet.



# Icon Plus

MEPV 144 cells — Eurener PV Module

› 450/460Wp



## Increased resistance

High salt mist and ammonia resistance



## Anti-PID

Ensured PID resistance



## Wider irradiance range

Improved performance under dawn, sunset and cloudy skies



## Half cut technology

Better shading tolerance



## High temperature performance

Better energy yield on sunny days



## Customizable

Wide range of finishing options for all types of projects



**20 Years**

Product Warranty

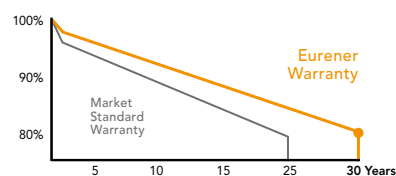
+5 years for Premium Partners

**30 Years**

Performance Warranty

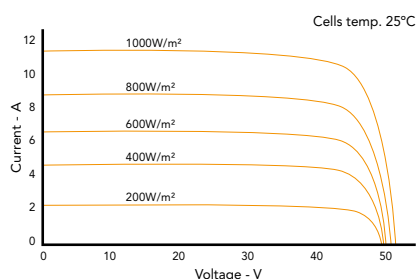
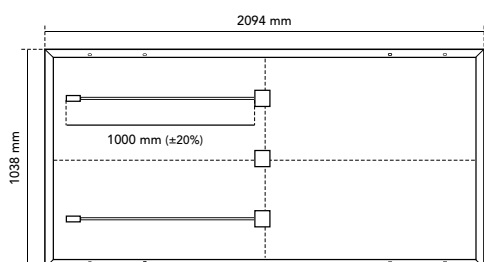
Linear Warranty

80% performance at 30 years





## Eurener MEPV 144 — ICON Plus 450-460Wp



### Mechanical Specification

Solar cells	144 (6 x 24), monocrystalline silicon cells
Front Glass	3,2 mm thick tempered glass with high strength and ARC
Frame	Black / Silver anodized aluminium
Junction Box	IP68, 3 by-pass diodes
Connector	Connector MC4 compatible
Cable	1000 mm (±20%) length and 4 mm² section
Dimension	2094 x 1038 x 35 mm (±1%)
Area	2,17 m²
Weight and packaging	25 kg, 726 pcs-truck

### Temperature Coefficients

Temperature coefficient of $I_{sc}$ ( $\alpha$ )	0,046 %/°C
Temperature coefficient of $V_{oc}$ ( $\beta$ )	-0,276 %/°C
Temperature coefficient of $P_{max}$ ( $\gamma$ )	-0,381 %/°C
Temperature range	-40 °C ~ +85 °C
Nominal operating cell temperature (NOCT)	42 ± 2 °C

### Black - Standard - Bicolour

### MEPV 450

### MEPV 460

STC: 1000 W/m², module temperature 25°C, AM 1,5

Nominal power. $P_{max}$	450 Wp	460 Wp
Module efficiency	20,72 %	21,19 %
Short-circuit current ( $I_{sc}$ )	11,50 A	11,66 A
Open-circuit voltage ( $V_{oc}$ )	49,98 V	50,38 V
Maximum power current ( $I_{mp}$ )	10,89 A	11,03 A
Maximum power voltage ( $V_{mp}$ )	41,36 V	41,76 V

NOCT: 800 W/m², ambient temperature 20°C, AM 1,5

Nominal power. $P_{max}$	338,64 W	349,78 W
Short-circuit current ( $I_{sc}$ )	9,26 A	9,37 A
Open-circuit voltage ( $V_{oc}$ )	47,18 V	47,52 V
Maximum power current ( $I_{mp}$ )	8,71 A	8,88 A
Maximum power voltage ( $V_{mp}$ )	38,88 V	39,39 V

### Operating parameters

Maximum voltage	1000 - 1500 V
Maximum series fuse rating. $I_r$	20 A
Power output tolerance	0 - +3%
$V_{oc}$ and $I_{sc}$ tolerance	±3%
Fire rating	Class C (UL 790)
Protection class	Class II (IEC 61140)
Hail resistance	HW3/RG3
Mechanical loads	Front load 5400 Pa, Back load 2400 Pa

NOTE: Read the instruction manual of this product and follow the indications STC. Values are valid for: 1000W/m², AM 1,5 and cells temperature of 25°C. Measurement tolerance +/-3% (AAA Solar simulation -IEC 60.904-9-). All the information of this brochure may be amended without notice by Eurener.

Eurener\_MEPV 144\_ICON Plus\_450-460Wp\_EN\_JAN2024

**SINCE**  
**1997**  
more than  
energy



**eurener.com**  
contact@eurenerworld.com  
+34 960 045 515  
Calle Colón, 1-23  
46004, Valencia. Spain

### Manufacturing a better world

Since 1997 our main purpose has been to supply quality and long-lasting photovoltaic modules that allow us and future generations, to continue generating clean energy to take care of our planet.

# Icon Plus

MEPV 132 cells — Eurener PV Module

› 500Wp



## Increased resistance

High salt mist and ammonia resistance



## Anti-PID

Ensured PID resistance



## Wider irradiance range

Improved performance under dawn, sunset and cloudy skies



## Half cut technology

Better shading tolerance



## Increased PV surface

Higher power output



## Customizable

Wide range of finishing options for all types of projects



**20 Years**

**Product Warranty**

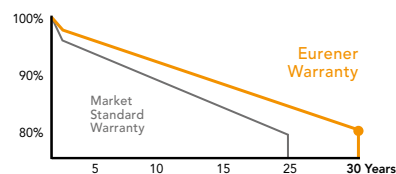
+5 years for Premium Partners

**30 Years**

**Performance Warranty**

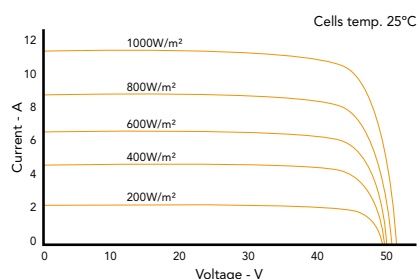
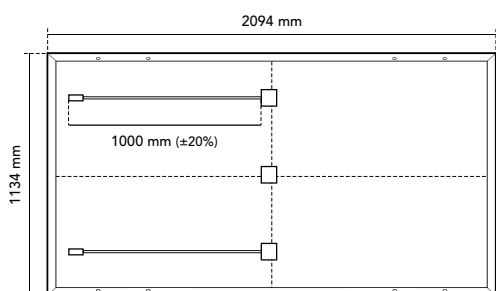
Linear Warranty

80% performance at 30 years





## Eurener MEPV 132 — ICON Plus 500Wp



### Mechanical Specification

Solar cells	132 (6 x 22), monocrystalline silicon cells
Front Glass	3,2 mm thick tempered glass with high strength and ARC
Frame	Black / Silver anodized aluminium
Junction Box	IP68, 3 by-pass diodes
Connector	Connector MC4 compatible
Cable	1000 mm (±20%) length and 4 mm² section
Dimension	2094 x 1134 x 35 mm (±1%)
Area	2,37 m²
Weight and packaging	26,3 kg, 682 pcs-truck

### Temperature Coefficients

Temperature coefficient of Isc ( $\alpha$ )	0,0445 %/°C
Temperature coefficient of Voc ( $\beta$ )	-0,275 %/°C
Temperature coefficient of Pmax ( $\gamma$ )	-0,350 %/°C
Temperature range	-40 °C ~ +85 °C
Nominal operating cell temperature (NOCT)	45 ± 2 °C

### Black - Standard - Bicolour

### MEPV 500

#### STC: 1000 W/m², module temperature 25°C, AM 1,5

Nominal power. Pmax	500 Wp
Module efficiency	21,06 %
Short-circuit current (Isc)	13,93 A
Open-circuit voltage (Voc)	45,59 V
Maximum power current (Imp)	13,04 A
Maximum power voltage (Vmp)	38,35 V

#### NOCT: 800 W/m², ambient temperature 20°C, AM 1,5

Nominal power. Pmax	377,50 W
Short-circuit current (Isc)	11,24 A
Open-circuit voltage (Voc)	43,08 V
Maximum power current (Imp)	10,53 A
Maximum power voltage (Vmp)	35,84 V

#### Operating parameters

Maximum voltage	1000 - 1500 V
Maximum series fuse rating. Ir	25 A
Power output tolerance	0 - +3%
Voc and Isc tolerance	±3%
Fire rating	Class C (UL 790)
Protection class	Class II (IEC 61140)
Hail resistance	HW3/RG3
Mechanical loads	Front load 5400 Pa, Back load 2400 Pa

NOTE: Read the instruction manual of this product and follow the indications STC. Values are valid for: 1000W/m², AM 1,5 and cells temperature of 25°C. Measurement tolerance +/-3% (AAA Solar simulation -IEC 60.904-9-). All the information of this brochure may be amended without notice by Eurener.

Eurener\_MEPV 132\_ICON Plus\_500Wp\_EN\_JAN2024

**SINCE**  
**1997**  
more than  
energy



**eurener.com**  
**contact@eurenerworld.com**  
+34 960 045 515  
Calle Colón, 1-23  
46004, Valencia. Spain

### Manufacturing a better world

Since 1997 our main purpose has been to supply quality and long-lasting photovoltaic modules that allow us and future generations, to continue generating clean energy to take care of our planet.

# Icon Plus

MEPV 144 cells — Eurener PV Module

› **550Wp**



## Increased resistance

High salt mist and ammonia resistance



## Anti-PID

Ensured PID resistance



## Wider irradiance range

Improved performance under dawn, sunset and cloudy skies



## Half cut technology

Better shading tolerance



## High temperature performance

Better energy yield on sunny days



## Increased PV surface

Higher power output



**20 Years**

**Product Warranty**

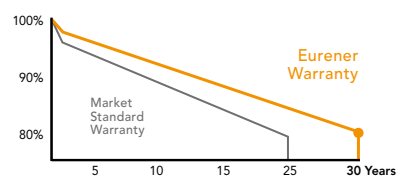
+5 years for Premium Partners

**30 Years**

**Performance Warranty**

Linear Warranty

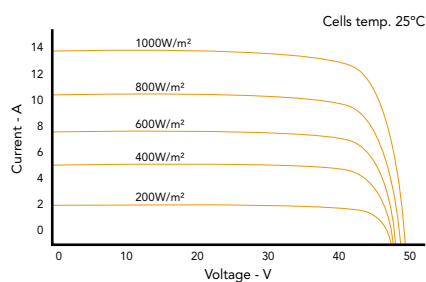
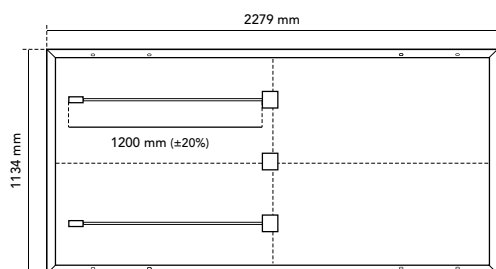
80% performance at 30 years







## Eurener MEPV 144 — ICON Plus 550Wp



### Mechanical Specification

Solar cells	144 (6 x 24), monocrystalline silicon cells
Front Glass	3,2 mm thick tempered glass with high strength and ARC
Frame	Silver anodized aluminium
Junction Box	IP68, 3 by-pass diodes
Connector	Connector MC4 compatible
Cable	1200 mm (±20%) length and 4 mm² section
Dimension	2279 x 1134 x 35 mm (±1%)
Area	2,58 m²
Weight and packaging	28 kg, 620 pcs-truck

### Temperature Coefficients

Temperature coefficient of Isc ( $\alpha$ )	0,047 %/°C
Temperature coefficient of Voc ( $\beta$ )	-0,27 %/°C
Temperature coefficient of Pmax ( $\gamma$ )	-0,34 %/°C
Temperature range	-40 °C ~ +85 °C
Nominal operating cell temperature (NOCT)	44 ± 2 °C

### Standard

### MEPV 550

#### STC: 1000 W/m², module temperature 25°C, AM 1,5

Nominal power. Pmax	550 Wp
Module efficiency	21,30 %
Short-circuit current (Isc)	13,93 A
Open-circuit voltage (Voc)	49,97 V
Maximum power current (Imp)	13,12 A
Maximum power voltage (Vmp)	41,95 V

#### NOCT: 800 W/m², ambient temperature 20°C, AM 1,5

Nominal power. Pmax	417,32 W
Short-circuit current (Isc)	11,24 A
Open-circuit voltage (Voc)	47,41 V
Maximum power current (Imp)	10,60 A
Maximum power voltage (Vmp)	39,39 V

#### Operating parameters

Maximum voltage	1000 - 1500 V
Maximum series fuse rating. Ir	25 A
Power output tolerance	0 - +3%
Voc and Isc tolerance	±3%
Fire rating	Class C (UL 790)
Protection class	Class II (IEC 61140)
Hail resistance	HW3/RG3
Mechanical loads	Front load 5400 Pa, Back load 2400 Pa

NOTE: Read the instruction manual of this product and follow the indications STC. Values are valid for: 1000W/m², AM 1,5 and cells temperature of 25°C. Measurement tolerance +/-3% (AAA Solar simulation -IEC 60.904-9-). All the information of this brochure may be amended without notice by Eurener.

Eurener\_MEPV 144\_ICON Plus\_550Wp\_EN\_JAN2024

**SINCE**  
**1997**  
more than  
energy



**eurener.com**  
**contact@eurenerworld.com**  
**+34 960 045 515**  
**Calle Colón, 1-23**  
**46004, Valencia. Spain**

### Manufacturing a better world

Since 1997 our main purpose has been to supply quality and long-lasting photovoltaic modules that allow us and future generations, to continue generating clean energy to take care of our planet.

# Icon Plus Bif

MEPV 144 cells — Eurener PV Module

› 550Wp



## Bifacial cell

Improved energy yield



## Anti-PID

Ensured PID resistance



## Wider irradiance range

Improved performance under dawn, sunset and cloudy skies



## Half cut technology

Better shading tolerance



## Increased PV surface

Higher power output



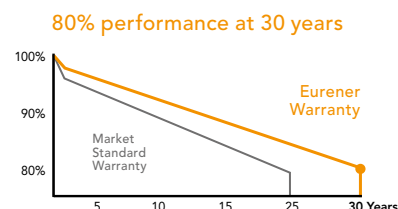
## Sustainable product

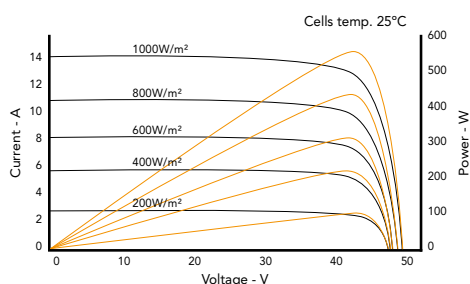
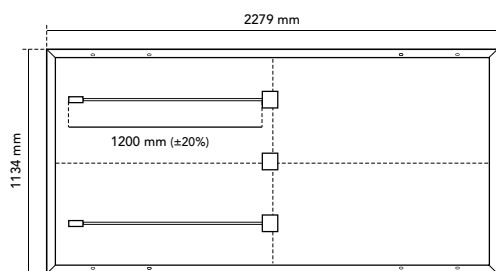
High percentage of recyclable materials



**30 Years**  
Product Warranty

**30 Years**  
Performance Warranty  
Linear Warranty





## Mechanical Specification

Solar cells	144(6 x 24), bifacial monocrystalline silicon cells
Front Glass	2mm anti-reflective surface solar glass
Back Glass	2mm solar glass
Frame	Silver anodized aluminium
Junction Box	IP68, 3 by-pass diodes
Connector	Connector MC4 compatible
Cable	1200 mm (±20%) length and 4 mm² section
Dimension	2279 x 1134 x 35 mm (±1%)
Area	2,58 m²
Weight and packaging	33 kg, 620 pcs-truck

## Temperature Coefficients

Temperature coefficient of Isc ( $\alpha$ )	0,045 %/°C
Temperature coefficient of Voc ( $\beta$ )	-0,275 %/°C
Temperature coefficient of Pmax ( $\gamma$ )	-0,34 %/°C
Temperature range	-40 °C ~ +85 °C
Nominal operating cell temperature (NOCT)	45 ± 2 °C

## Standard

## MEPV 550

STC: 1000 W/m2, module temperature 25°C, AM 1,5	
Nominal power. Pmax	550 Wp
Module efficiency	21,28 %
Short-circuit current (Isc)	14,30 A
Open-circuit voltage (Voc)	49,32 V
Maximum power current (Imp)	13,27 A
Maximum power voltage (Vmp)	41,45 V
NOCT: 800 W/m2, ambient temperature 20°C, AM 1,5	
Nominal power. Pmax	418,94 W
Short-circuit current (Isc)	11,52 A
Open-circuit voltage (Voc)	47,06 V
Maximum power current (Imp)	10,69 A
Maximum power voltage (Vmp)	39,19 V
Electrical characteristics with 10% rear side power gain	
Nominal power. Pmax	605,00 W
Short-circuit current (Isc)	15,67 A
Open-circuit voltage (Voc)	49,50 V
Maximum power current (Imp)	14,54 A
Maximum power voltage (Vmp)	41,60 V
Operating parameters	
Maximum voltage	1500 V
Maximum series fuse rating. Ir	20 A
Power output tolerance	0 - +3%
Voc and Isc tolerance	±3%
Fire rating	Class A (UL 790)
Protection class	Class II (IEC 61140)
Hail resistance	Ø 25mm at 23 m/s (IEC 61215)
Mechanical loads	Front load 5400 Pa, Back load 2400 Pa

NOTE: Read the instruction manual of this product and follow the indications STC. Values are valid for: 1000W/m², AM 1,5 and cells temperature of 25°C. Measurement tolerance +/-3% (AAA Solar simulation -IEC 60.904-9-). All the information of this brochure may be amended without notice by Eurener.

Eurener\_MEPV 144\_ICON Plus Bif\_550Wp\_EN\_JAN2024

**SINCE**  
**1997**  
more than  
energy



**eurener.com**  
contact@eurenerworld.com  
+34 960 045 515  
Calle Colón, 1-23  
46004, Valencia. Spain

## Manufacturing a better world

Since 1997 our main purpose has been to supply quality and long-lasting photovoltaic modules that allow us and future generations, to continue generating clean energy to take care of our planet.



MORE THAN  
ENERGY





## MEPV AGRO Series

✎ *Solar innovation for agrovoltatics and beyond.*

Harvest the sun's brightness with our versatile solar panels for agrovoltatics, carports, and resilient greenhouses.



# MEPV AGRO

from 325 to 335Wp



## Improved energy yield under unfavourable conditions

Cells capable of absorbing light during dawn and sunset.

Better response to diffuse light (dusty or cloudy skies).



## Bifacial

Bifaciality effectively improves rear power generation with more than a 10% increase in the output compared to having only a monofacial side.



## Sustainability

Resistant and long-lasting modules with high percentage of recyclable materials.



## High transparency

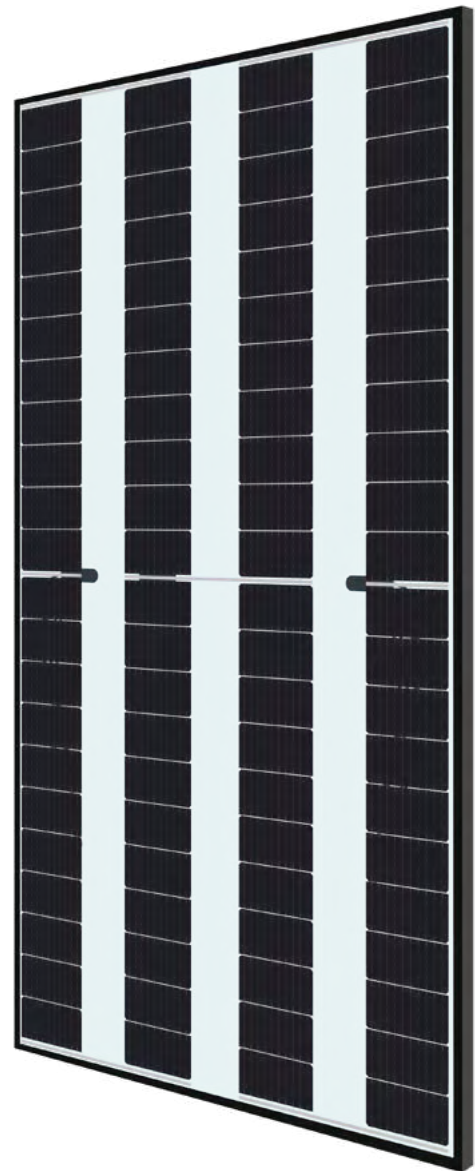
A special cell disposition allows a high percentage of light to pass through the module.



## Wide variety of applications

Perfect for integration in greenhouses and agrovoltaic applications.

Also suitable for carports or other types of roofs.





## MEPV AGRO Series

↘ DATA SHEETS

- › Eurener MEPV 88 AGRO BIF 325-335Wp  
*pag. 53/54*

# Agro Bif

MEPV 88 cells — Eurener PV Module

› 325/330/335 Wp



## Wider irradiance range

Improved performance under dawn, sunset and cloudy skies



## High temperature performance

Better energy yield on sunny days



## High frame quality

Robust and resistant to corrosion



## Better light transmission

High percentage of light can pass through it



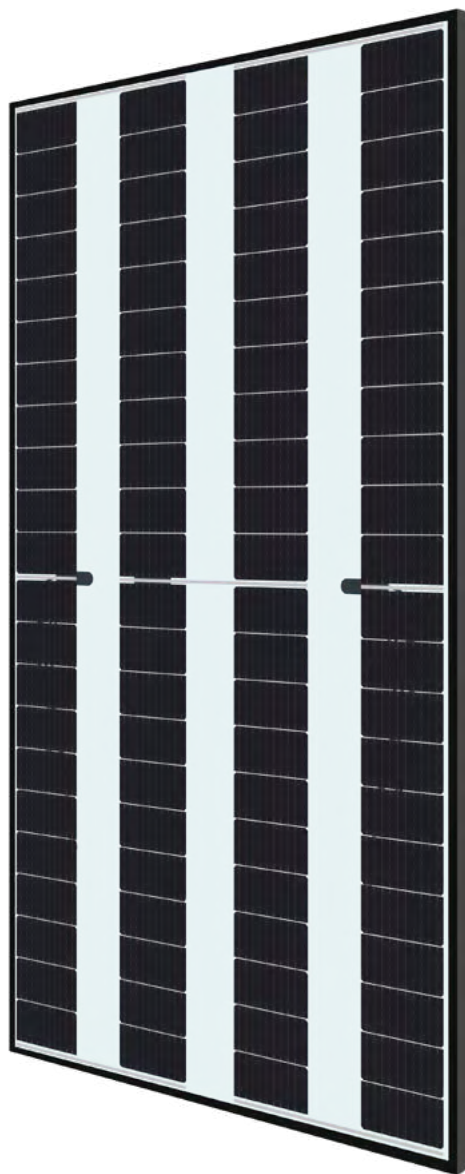
## Versatility

For greenhouses, carports or other roofs



## Sustainable product

High percentage of recyclable materials



**25 Years**

**Product Warranty**

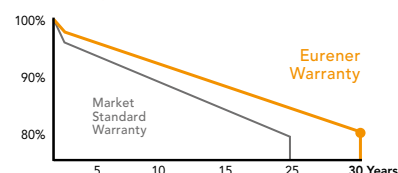
+5 years for Premium Partners

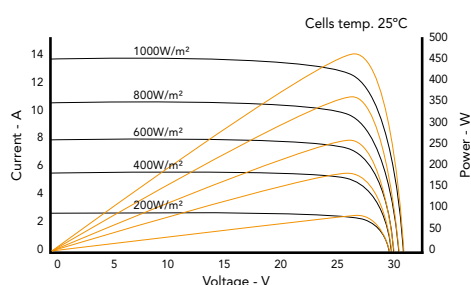
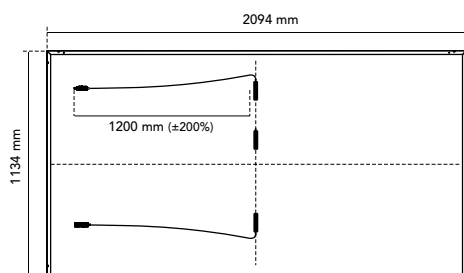
**30 Years**

**Performance Warranty**

Linear Warranty

80% performance at 30 years





## Mechanical Specification

Solar cells	88 bifacial monocrystalline silicon cells
Front Glass	2mm anti-reflective surface solar glass
Back Glass	2mm solar glass
Frame	Black anodized aluminium
Junction Box	IP68, 3 by-pass diodes
Connector	Original MC4-Evo 2
Cable	1200 mm (±20%) length and 4 mm² section
Dimension	2094 x 1134 x 30 mm (±1%)
Area	2,37 m²
Weight and packaging	30 kg, 792 pcs-truck

## Temperature Coefficients

Temperature coefficient of Isc ( $\alpha$ )	0,063 %/°C
Temperature coefficient of Voc ( $\beta$ )	-0,269 %/°C
Temperature coefficient of Pmax ( $\gamma$ )	-0,335 %/°C
Temperature range	-40 °C ~ +85 °C
Nominal operating cell temperature (NOCT)	42 ± 3 °C

Black	MEPV 325	MEPV 330	MEPV 335
<b>STC: 1000 W/m², module temperature 25°C, AM 1,5</b>			
Nominal power. Pmax	325 Wp	330 Wp	335 Wp
Module efficiency	13,67 %	13,93 %	14,15 %
Short-circuit current (Isc)	13,54 A	13,76 A	13,93 A
Open-circuit voltage (Voc)	30,31 V	30,47 V	30,68 V
Maximum power current (Imp)	12,88 A	12,97 A	13,13 A
Maximum power voltage (Vmp)	25,26 V	25,46 V	25,55 V
<b>NOCT: 800 W/m², ambient temperature 20°C, AM 1,5</b>			
Nominal power. Pmax	247 Wp	251 Wp	255 Wp
Short-circuit current (Isc)	10,96 A	11,14 A	11,31 A
Open-circuit voltage (Voc)	28,77 V	28,96 V	29,13 V
Maximum power current (Imp)	10,45 A	10,53 A	10,62 A
Maximum power voltage (Vmp)	23,70 V	23,87 V	24,05 V
<b>Electrical characteristics with 10% rear side power gain</b>			
Nominal power. Pmax	358 W	363 W	369 W
Short-circuit current (Isc)	14,89 A	15,14 A	15,32 A
Open-circuit voltage (Voc)	30,31 V	30,47 V	30,68 V
Maximum power current (Imp)	14,15 A	14,26 A	14,42 A
Maximum power voltage (Vmp)	25,26 V	25,46 V	25,55 V
<b>Operating parameters</b>			
Maximum voltage	1500 V		
Maximum series fuse rating. Ir	30 A		
Power output tolerance	0 - +3%		
Voc and Isc tolerance	±3%		
Fire rating	Class A (UL 790)		
Protection class	Class II (IEC 61140)		
Hail resistance	Ø 25mm at 23 m/s (IEC 61215)		
Mechanical loads	Front load 5400 Pa, Back load 2400 Pa		

NOTE: Read the instruction manual of this product and follow the indications STC. Values are valid for: 1000W/m², AM 1,5 and cells temperature of 25°C. Measurement tolerance +/-3% (AAA Solar simulation -IEC 60.904-9-). All the information of this brochure may be amended without notice by Eurener.

Eurener\_MEPV 88\_AGRO Bif\_325-335Wp\_EN\_JAN2024

**SINCE**  
**1997**  
more than  
energy



**eurener.com**  
contact@eurenerworld.com  
+34 960 045 515  
Calle Colón, 1-23  
46004, Valencia. Spain

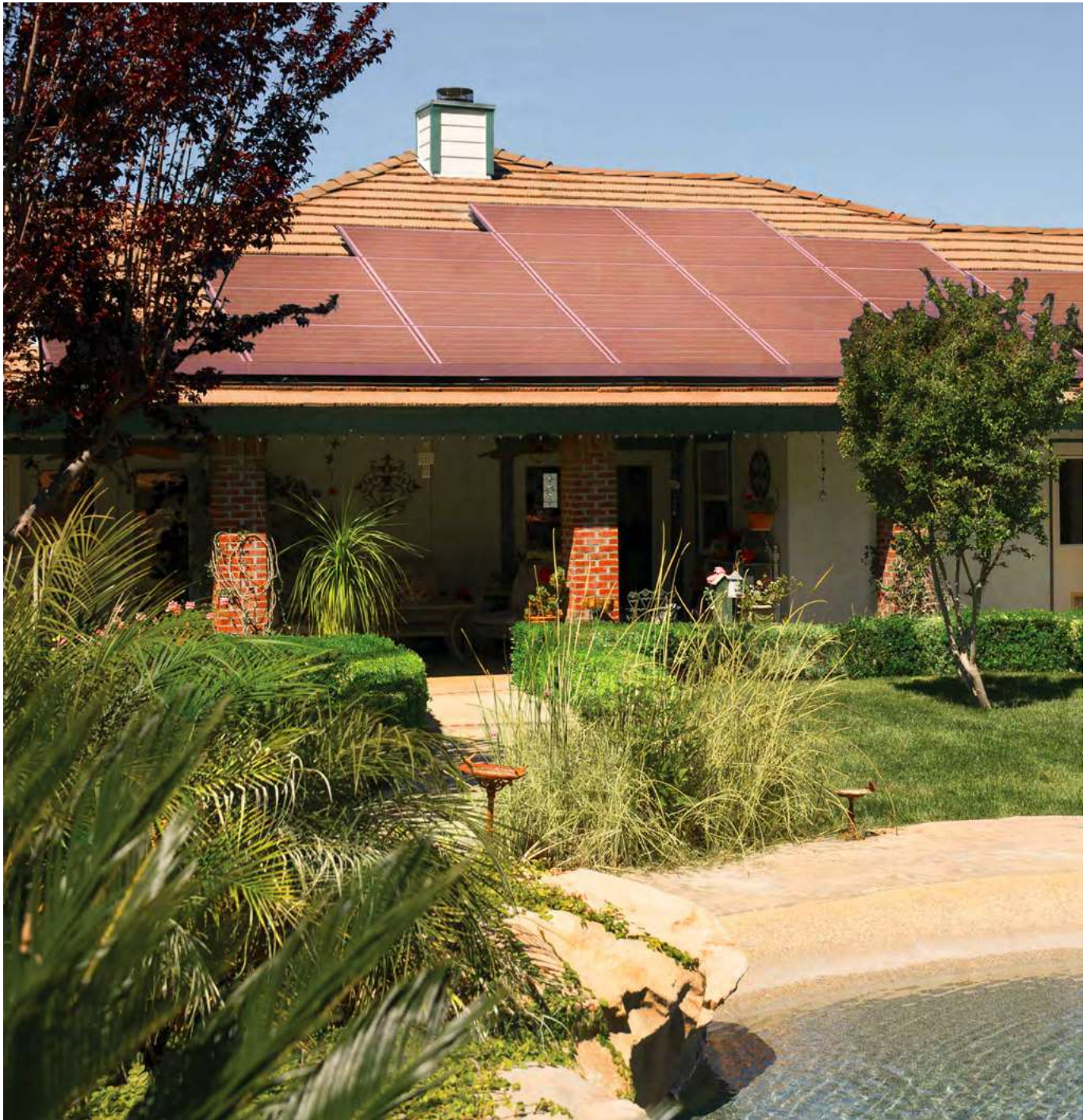
## Manufacturing a better world

Since 1997 our main purpose has been to supply quality and long-lasting photovoltaic modules that allow us and future generations, to continue generating clean energy to take care of our planet.



MORE THAN  
ENERGY





## MEPV COLOURED Series

✎ *Solar panels that shine in every tones.*

Enhance your style with vibrant colours. Solar panels that blend seamlessly to give every surface a unique glow.

# MEPV COLOURED BIPV

from 350 to 360Wp



## Half cut technology

The parallel connection of the half-cell modules maintains production when one of the parts is shaded.

This increases efficiency and reliability reducing the appearing of hot spots and dismisin cell degradation.



## Improved energy yield under unfavourable conditions

Cells capable of absorbing light during dawn and sunset.

Better response to diffuse light (dusty or cloudy skies).



## Optimized area (<2m²)

Perfect size for comfortable installations and easy handling.

Maintaining suitable power outputs.



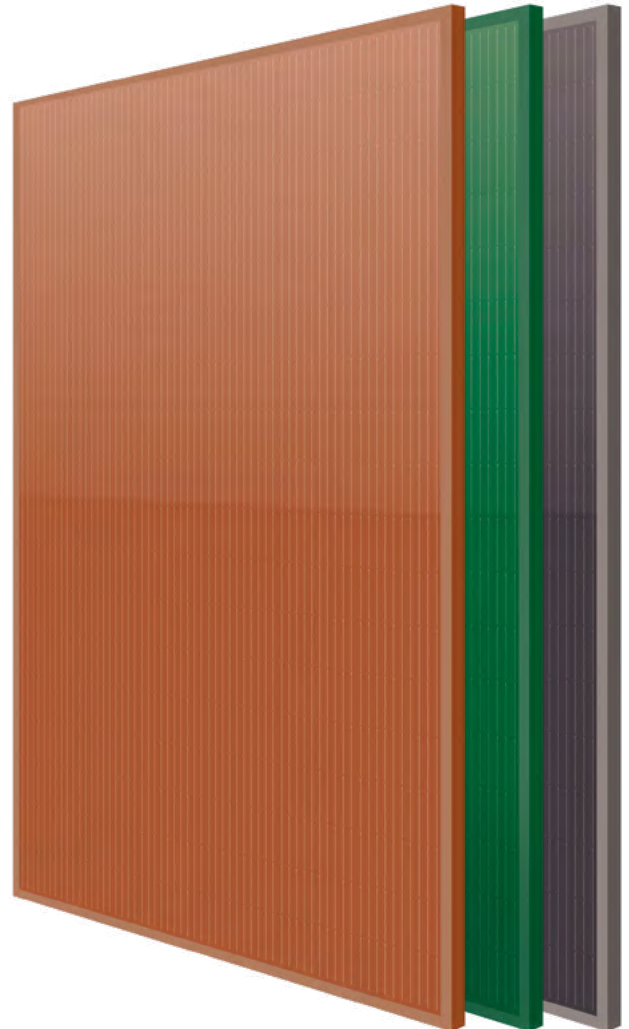
## BIPV

Perfect module for architectural integration.



## Colour selection

Modules available in 3 colours for a perfect match with different roofs or facades.





## MEPV COLOURED Series

↘ DATA SHEETS

- › Eurener MEPV 108 COLOURED BIPV 350-360Wp  
*pag. 59/60*



# Coloured BIPV

MEPV 108 cells — Eurener PV Module

› 350/360Wp



## BIPV

Architectural integration



## Colour selection

Wide range of colours for a perfect roof integration



## Easy to handle

Comfortable installation thanks to an optimized area size



## Half cut technology

Better shading tolerance



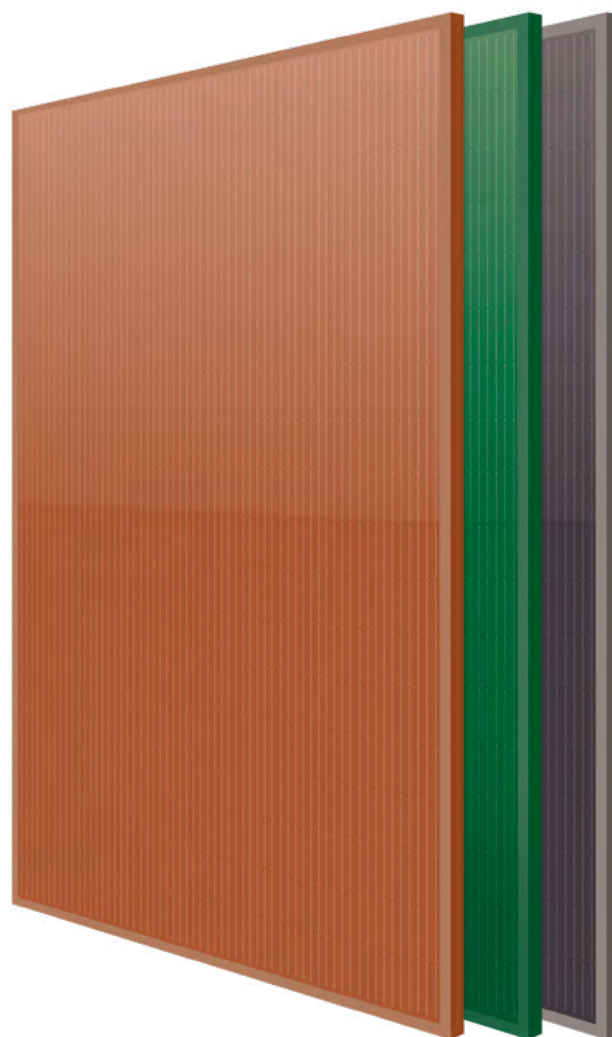
## Wider irradiance range

Improved performance under dawn, sunset and cloudy skies



## High temperature performance

Better energy yield on sunny days



**20 Years**

**Product Warranty**

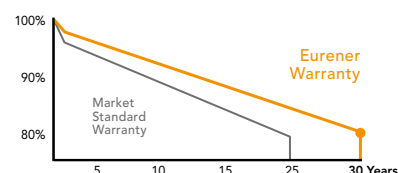
+5 years for Premium Partners

**30 Years**

**Performance Warranty**

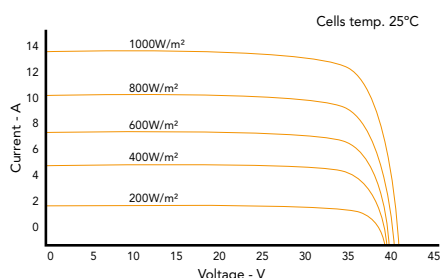
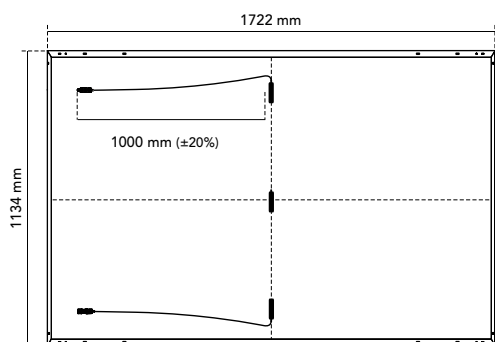
Linear Warranty

80% performance at 30 years





## Eurener MEPV 108 — COLOURED BIPV 350-360Wp



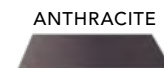
### Mechanical Specification

Solar cells	108 (6 x 18), monocrystalline silicon cells
Front Glass	3,2 mm thick tempered glass with high strength and ARC
Frame	Terracotta / Emerald / Anthracite anodized aluminium
Junction Box	IP68, 3 by-pass diodes
Connector	Connector MC4 compatible
Cable	1000 mm (±20%) length and 4 mm² section
Dimension	1722 x 1134 x 30 mm (±1%)
Area	1,95 m²
Weight and packaging	20,8 kg, 936 pcs-truck

### Temperature Coefficients

Temperature coefficient of Isc ( $\alpha$ )	0,05 %/°C
Temperature coefficient of Voc ( $\beta$ )	-0,28 %/°C
Temperature coefficient of Pmax ( $\gamma$ )	-0,35 %/°C
Temperature range	-40 °C ~ +85 °C
Nominal operating cell temperature (NOCT)	45 ± 2 °C

3 colour selection  
for a perfect roof integration



MEPV 350

MEPV 360

MEPV 350

MEPV 360

MEPV 350

MEPV 360

STC: 1000 W/m², module temperature 25°C,  
AM 1,5

Nominal power. Pmax	350 Wp	360 Wp	350 Wp	360 Wp	350 Wp	360 Wp
Module efficiency	17,92 %	18,44 %	17,92 %	18,44 %	17,92 %	18,44 %
Short-circuit current (Isc)	11,92 A	12,24 A	11,93 A	12,25 A	11,92 A	12,23 A
Open-circuit voltage (Voc)	36,91 V	37,15 V	36,93 V	37,17 V	36,89 V	37,14 V
Maximum power current (Imp)	11,44 A	11,69 A	11,44 A	11,70 A	11,43 A	11,68 A
Maximum power voltage (Vmp)	30,65 V	30,85 V	30,66 V	30,86 V	30,65 V	30,86 V

NOCT: 800 W/m², ambient temperature 20°C,  
AM 1,5

Nominal power. Pmax	265 W	270 W	265 W	270 W	265 W	270 W
Short-circuit current (Isc)	9,38 A	9,54 A	9,38 A	9,55 A	9,36 A	9,53 A
Open-circuit voltage (Voc)	34,90 V	35,17 V	34,93 V	35,20 V	34,89 V	35,15 V
Maximum power current (Imp)	9,23 A	9,36 A	9,24 A	9,36 A	9,22 A	9,35 A
Maximum power voltage (Vmp)	28,73 V	28,87 V	28,69 V	28,91 V	28,75 V	28,89 V

### Operating parameters

Maximum voltage	1000 - 1500 V
Maximum series fuse rating. Ir	25 A
Power output tolerance	0 - +3%
Voc and Isc tolerance	±3%
Fire rating	Class C (UL 790)
Protection class	Class II (IEC 61140)
Hail resistance	HW3/RG3
Mechanical loads	Front load 5400 Pa, Back load 2400 Pa

NOTE: Read the instruction manual of this product and follow the indications STC. Values are valid for: 1000W/m², AM 1,5 and cells temperature of 25°C. Measurement tolerance +/-3% (AAA Solar simulation -IEC 60.904-9-). All the information of this brochure may be amended without notice by Eurener.

Eurener\_MEPV 108\_COLOURED BIPV\_350-360Wp\_EN\_JAN2024

SINCE  
1997  
more than  
energy



eurener.com  
contact@eurenerworld.com  
+34 960 045 515  
Calle Colón, 1-23  
46004, Valencia. Spain

### Manufacturing a better world

Since 1997 our main purpose has been to supply quality and long-lasting photovoltaic modules that allow us and future generations, to continue generating clean energy to take care of our planet.





MORE THAN  
ENERGY



**eurener**  
energía solar

MORE THAN ENERGY  
[www.eurener.com](http://www.eurener.com)